

VI. Baja Grain Partnership Conference 05/06/2014

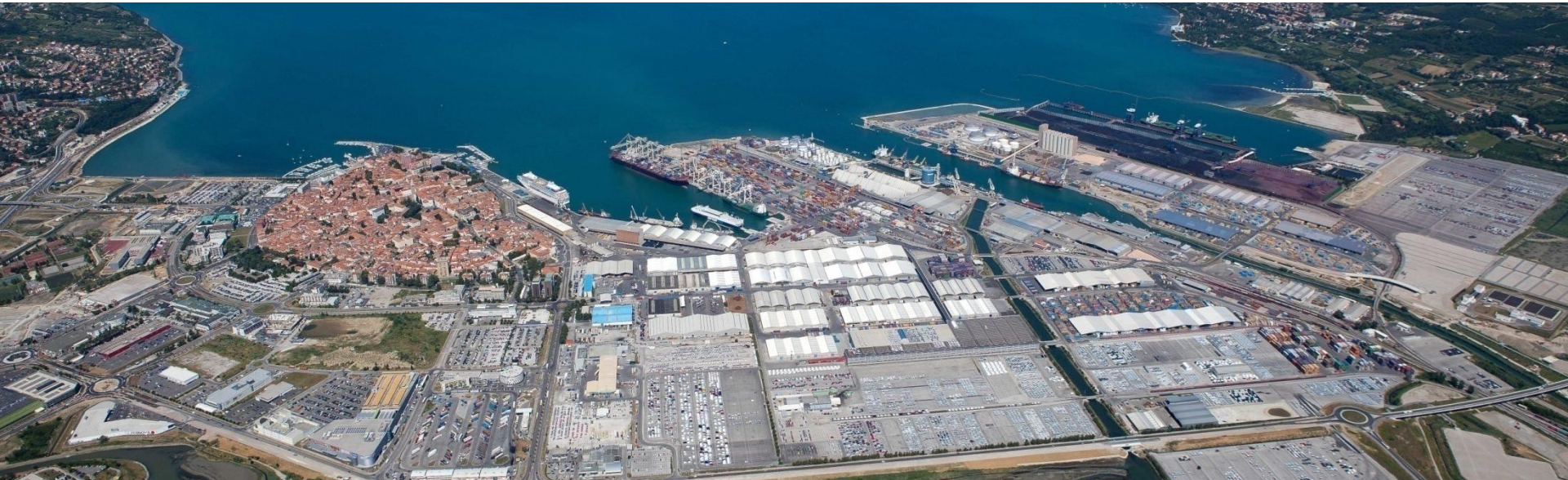


Green Intermodal Freight Transport

Mr. Gordan Ban
Representative of Luka Koper d.d.
Logodi utca 34a/III
H-1020-Budapest
mobile:+36 70 593 9281
e-mail:budapest@luka-kp.si

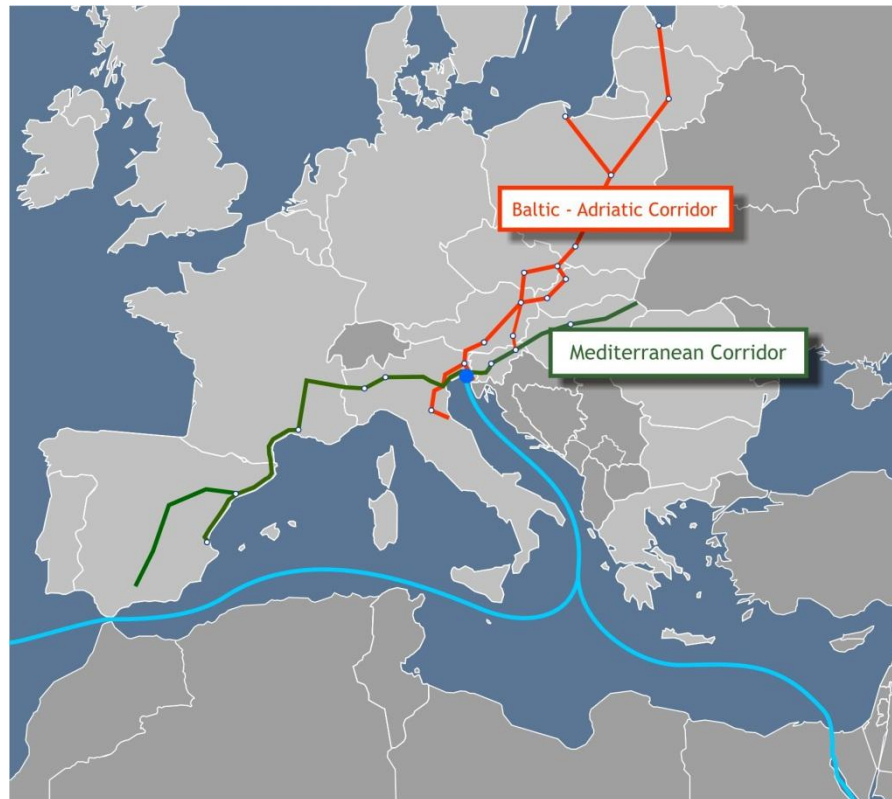
Port of Koper overview

- 280 ha of port area
- **Multi-purpose port** – company Luka Koper is the only terminal operator
- Most of today's area was reclaimed from the sea
- **Transit oriented** (only 30% for national market)
- Relevant institutional and local influence (EU port, NAPA, ESPO and FEPORT member, ISPS Code, different standards ISO 9001, 14001, 18001, EMAS etc.)

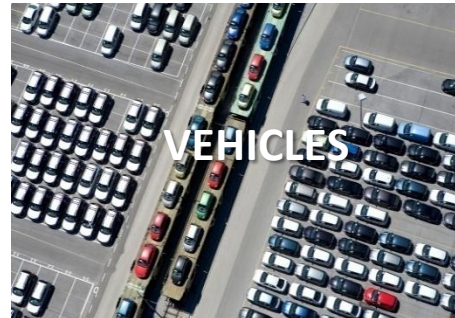


Strategic location

- North Adriatic Region / Suez ... (actualization of the region, relieving the congested EU areas and corridors; influencing on a balanced regional development),
- On the crossroad of Baltic-Adriatic corridor and Mediterranean corridor.

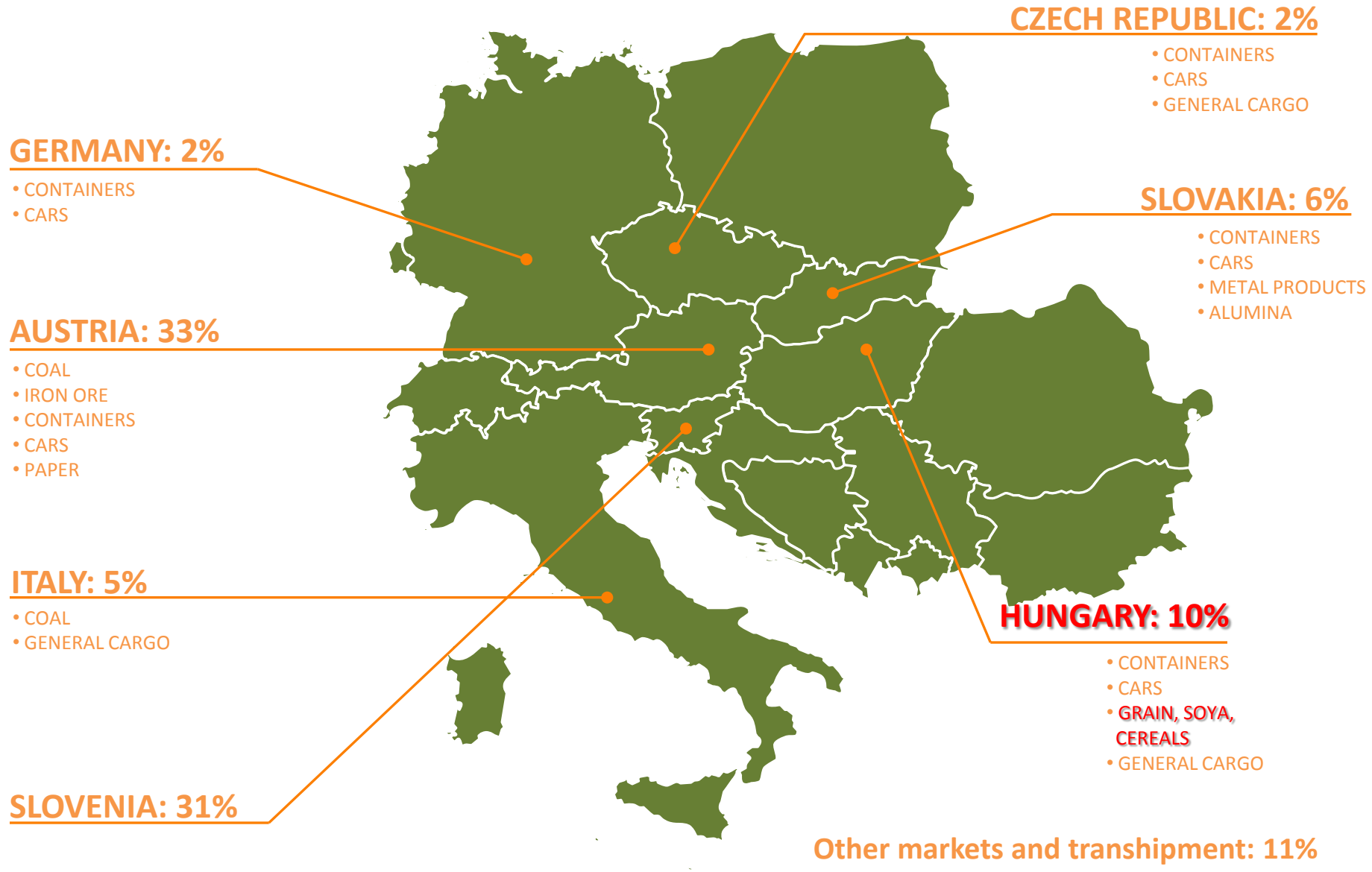


Multi-purpose port



Hinterland markets

Percentage of total throughput (2011)

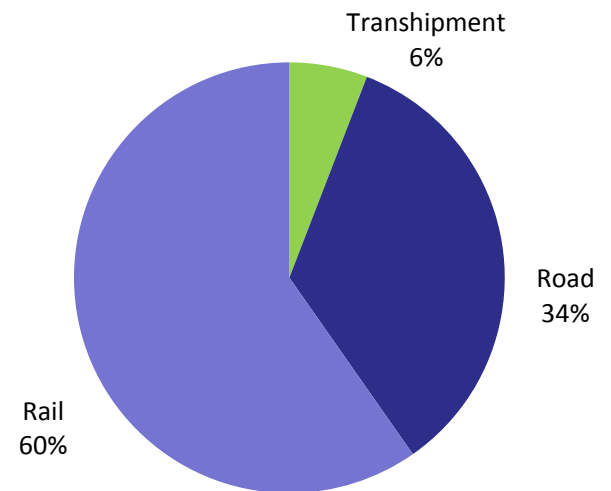


Excellent railway connections

60% of total port throughput is transported on railway



Modal split



Dry Bulk Terminal



Flat stores for minerals

Silo for grain/cereals/soya

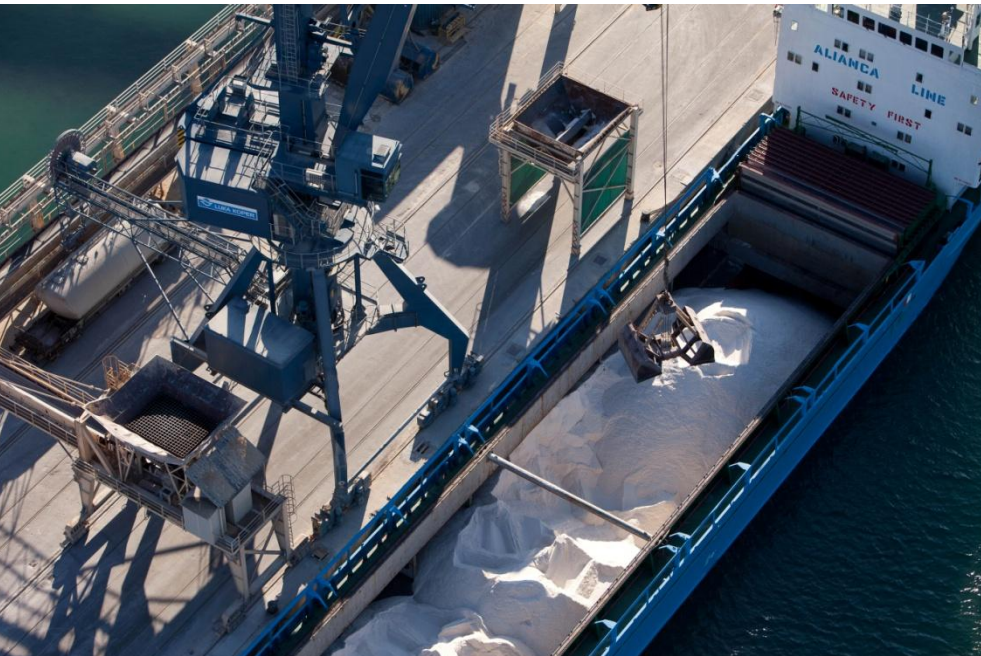
Silo for alumina

Flat stores for soya

- Annual maritime throughput: 2 million tonnes,
- 4 cargo segments: minerals, alumina, cereals/fodder and soya,
- Handling about 50 different types of dry bulk cargoes,
- 110 employees,
- Operations performed 365 days/year in 3 shifts.

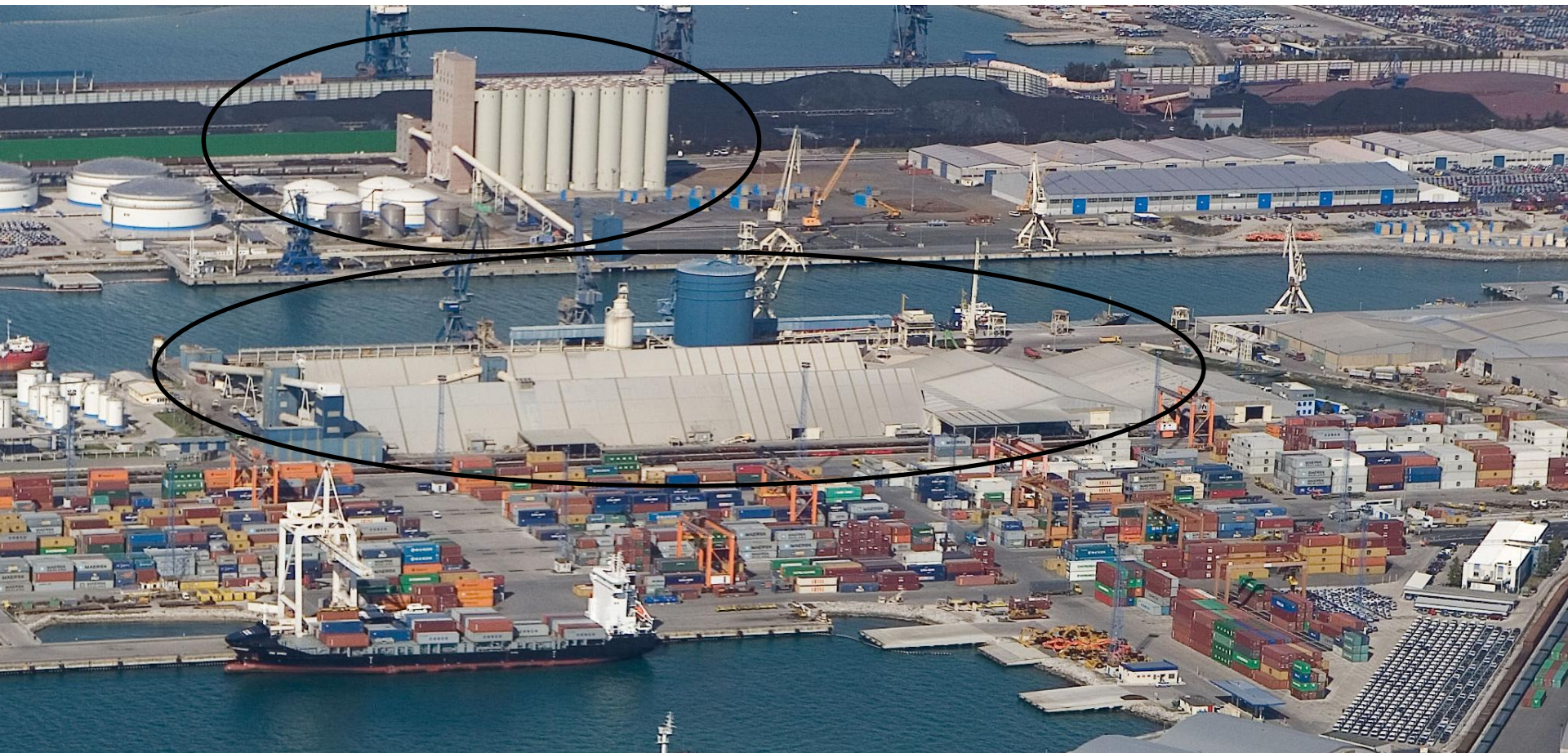
Cargo segments

- Cereals,
 - soya (beans, pellets, meal)
 - maize
 - wheat
 - sugar beet pellets
 - rape-oil seeds
 - sunflower seeds
 - barley
- Minerals,
 - Alumina



Terminal Capacity for cereals/fodder and soya

- Operative quay: 500 m
 - Sea depth: 13.5 m
 - Silo for cereals storage (capacity 60,000 tons)
 - Triangular and flat warehouse (capacity 65,000 tons)
- Food safety:
 - HACCP certificate
 - NON GMO certificate
 - EKO certificate



Terminal services

- **Loading/unloading service capacities**

- up to 6,000 tons/day
- up to 125 wagons/day
- up to 300 trucks/day

- **Additional services on cargo**

- Stuffing – Stripping
- Bagging
- Fumigation
- Separation
- Weighing





GIFT

Green Intermodal Freight Transport

Project **GIFT**

- **GIFT – Green Intermodal Freight Transport**
- **Priority:** Improving accessibility/ improving frameworks for multimodal transport
- **Partnership:** 27 partners (10 countries) – Public institutions, Transport operators, Commercial associations, Research institutes, Transportation agencies
- **Project budget:** 4,040,493.70 EUR (85% co-financed by ERDF)
- **Duration:** 3/2012-8/2014 (30 months)

Main aims

- **To map, analyze and assess** the conditions of the transport sector in the GIFT area (Southeast Europe)
- To suggest new strategies and policies: infrastructural, operational, IT and legal side
- To develop ICT tools and a methodology to control CO₂ emissions
- To improve interoperability and intermodality of freight transport on land, inland waterways and by sea.
- To identify **green corridors** in Southeastern Europe area with the main purpose which consists in promoting innovative technologies and shifting to more environmental friendly transport means.
- **To promote innovative green freight transport corridors.**

Expected results

- Identification of the state of the art and disadvantages on three selected PAN EU corridors (IV, V in VII)
- Synthesis of new policies and strategy for intermodal transport
- Comparative analysis, evaluation and potential change of the three corridors into „*Green corridors*“
- Pilot testing and establishment of „*Green observatory*“ for CO₂ emission monitoring
- Establishment of a sustainability transport plan for future development

The added value of the project

- Strategic project of the program Southeast Europe (SEE)!
- Results of the project will serve as a basis for the „Cohesion policy“ and for program’s aims in Southeast Europe area for the period 2014 - 2020!
- The creation of „**Green Corridors**“ will reduce bottlenecks, environmental impacts and will improve the efficiency of transport and logistics!



THANK YOU FOR YOUR ATTENTION!

WWW.GIFT-PROJECT.EU



The logo for GIFT (Green Intermodal Freight Transport) features the letters 'GIFT' in a bold, green, sans-serif font. The letter 'I' is replaced by a stylized green leaf with a stem and a small vein.

Green Intermodal Freight Transport