



## Eastern Europe Cereal Hub



**8th Baja Grain Partnership, 8 - 9th June 2016**

# Constanța Port – Eastern European Gateway

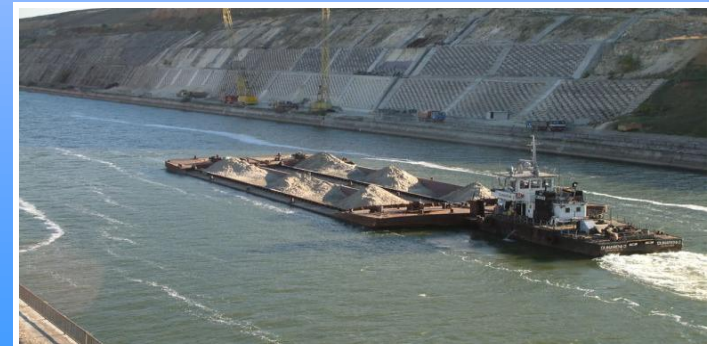


## ➤ The Rhine – Danube Corridor

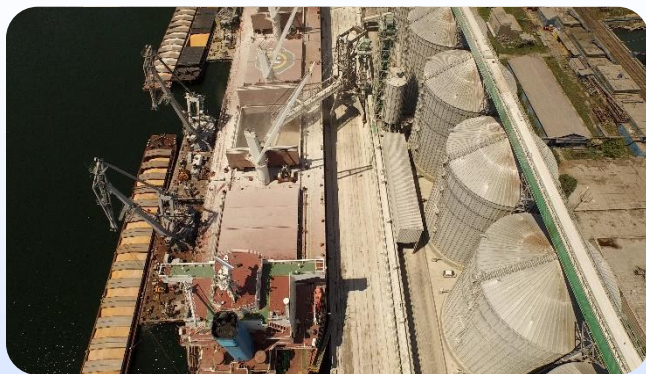


- connection through the Danube - Black Sea Canal

- the Canal is 64.4 km long and 90 m wide and has a water depth of 7 m and 17.5 m clearance under the bridges



# Constantza Port traffic 2014-2015



	2014 (thousand of tons)	2015 (thousand of tons)
<b>Total Cargo Handled</b>	<b>55.641,9</b>	<b>56.336,7</b>
<b>Maritime Cargo</b>	<b>43.053</b>	<b>43.604</b>
<b>River Cargo</b>	<b>12.589</b>	<b>12.733</b>
<b>Liquid bulk</b>	<b>12.580</b>	<b>12.268</b>
<b>Solid bulk</b>	<b>34.657</b>	<b>35.565</b>
<b>General cargo</b>	<b>8.408</b>	<b>8.502</b>
<b>Containers</b>	<b>6.780</b>	<b>6.850</b>
<b>Seagoing Ship Calls</b>	<b>4.771</b>	<b>4.605</b>
<b>River Ship Calls</b>	<b>10.057</b>	<b>9.765</b>
<b>Total Ship Calls</b>	<b>14.828</b>	<b>14.370</b>

# Specialized grain terminals in the Port of Constantza



57.000 tons



257.800 tons



90.000 tons



110.000 tons



260.000 tons



100.000 tons

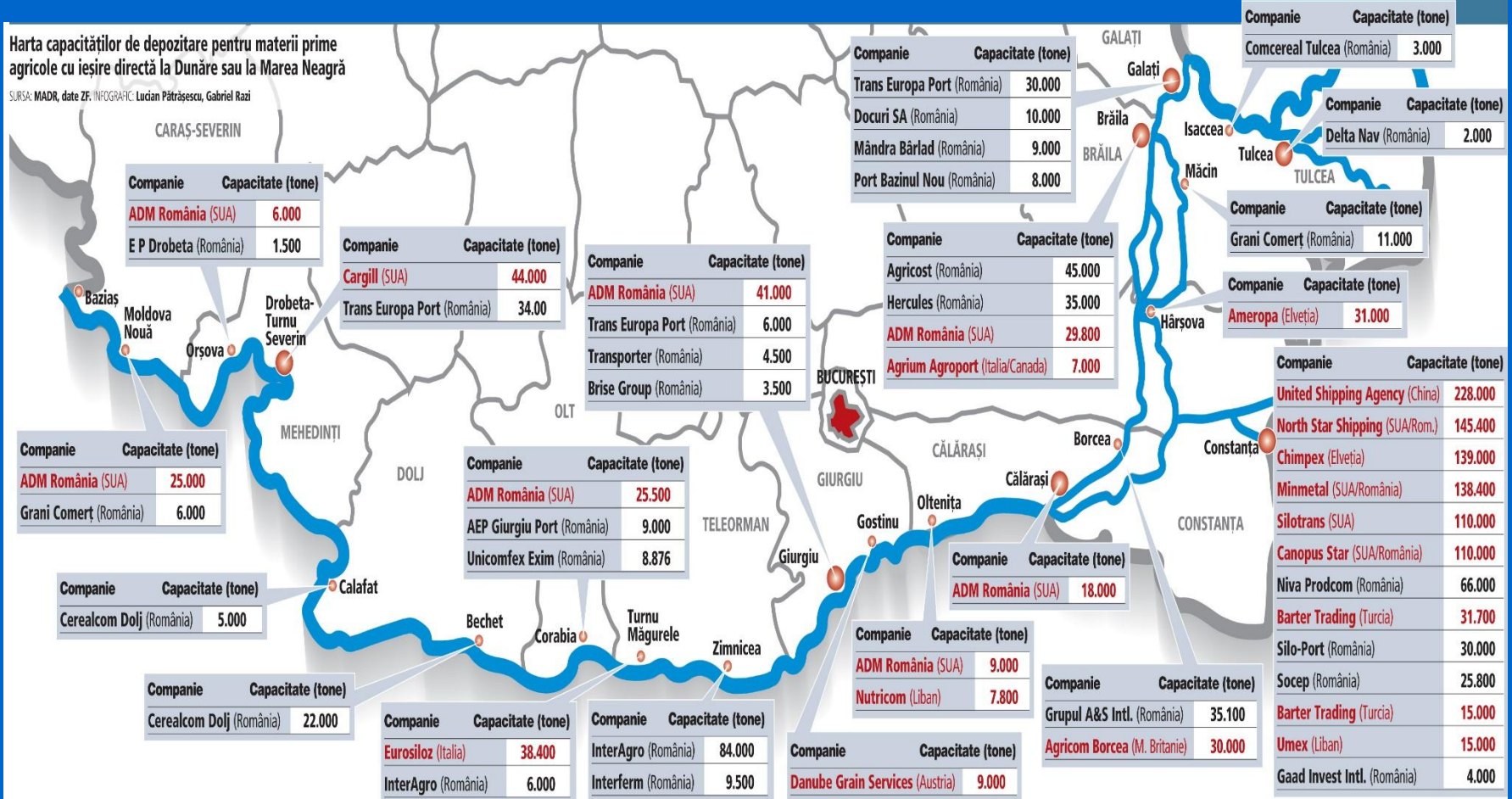


235.000 tons

# Information related to investments in grain terminals on the Danube River

Harta capacităților de depozitare pentru materii prime agricole cu ieșire directă la Dunăre sau la Marea Neagră

SURSA: MADR, date ZF. INFOGRAFIC: Lucian Pătrășescu, Gabriel Razi





# Cargo traffic from Hungary

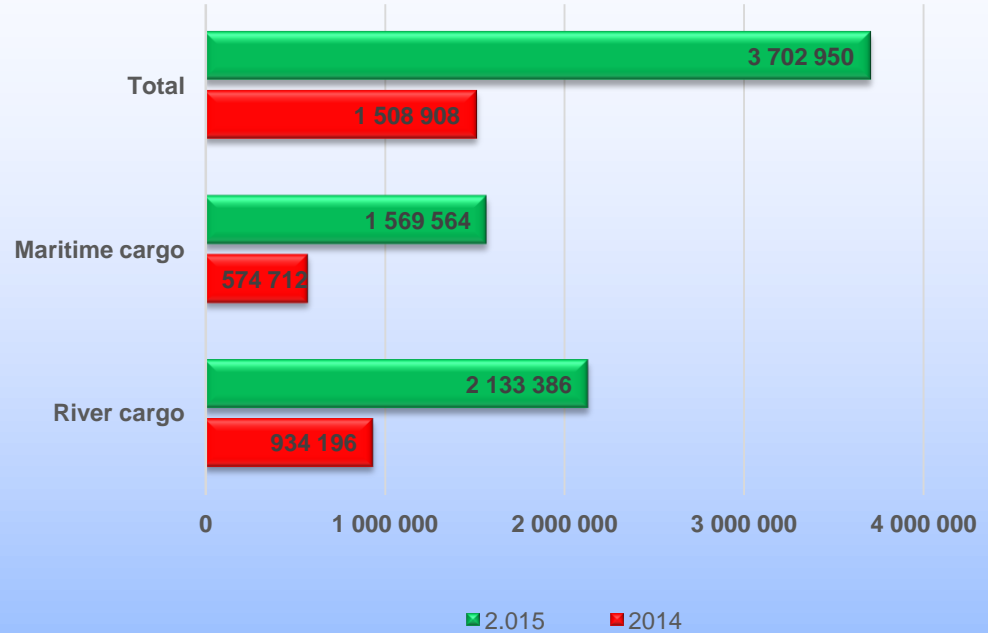
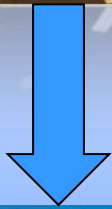
■ River cargo     
 ■ Maritime cargo     
 ■ TOTAL



Years	2007	2008	2009	2010	2011	2012	2013	2014	2015
River Cargo	1.335.896	1.809.130	2.268.534	2.542.411	1.197.933	2.058.398	1.938.083	1.698.202	3.156.464
Maritime cargo	974.304	1.161.258	994.552	1.378.852	498.053	1.102.465	896.123	1.083.061	2.565.164
TOTAL	2.310.200	2.970.388	3.263.086	3.921.263	1.695.986	3.160.863	2.834.209	2.781.263	5.721.628



# Agribulk traffic between Hungary and Romania



Cereals traffic from Hungary			
Cereals (tons)	2014	2015	%
River Cargo	934.196	2.133.386	228,37
Maritime Cargo	574.712	1.569.564	273,10
<b>TOTAL</b>	<b>1.508.908</b>	<b>3.702.950</b>	<b>245,41</b>

# New developments in grain terminals



200.000 tons



200.000 tons



# Constanța Port is ready to welcome your business !



**N.C. Maritime Ports Administration S.A. Constanța Address: Incinta Port, Gara Maritima, 900900, Constanța, Romania**

**Phone: +40 241.611540**

**Fax: +40 241.619512**

**E-mail : [apmc@constantza-port.ro](mailto:apmc@constantza-port.ro)**

**Website: [www.portofconstantza.com](http://www.portofconstantza.com)**

