



**Eastern Europe  
Cereal Hub**

**5th Baja Grain Partnership – 6th June 2013**

# General Information



- Largest port at the Black Sea – 3,926 ha
- Natural water depths up to 19 m
- 156 berth → 140 operational berths
- Quay length -32 km



- Main cereals hub and container hub in the Black Sea
- Multipurpose port
- Land/water availability for future expansion
- Starting January 2007, the Port of Constanța has become a port with Customs facilities

# Constanța Port – Eastern European Gateway

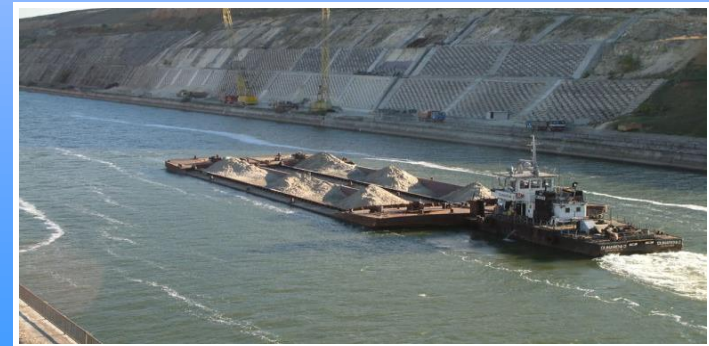


## ➤ Pan-European Corridor no. VII – The Danube



- connection through the Danube - Black Sea Canal

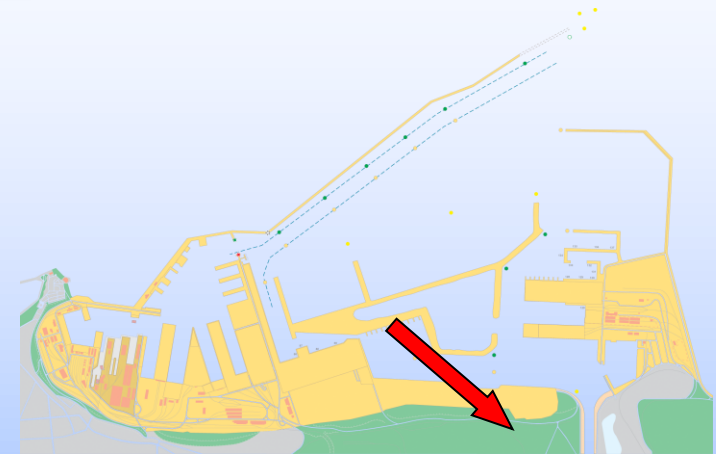
- the Canal is 64.4 km long and 90 m wide and has a water depth of 7 m and 17.5 m clearance under the bridges



# Constanța Port – Eastern European Gateway



## ➤ Pan-European Corridor no. IV (road and railway)



- connection through the A2 Highway București-Constanța

- direct port connection with the A2 Highway near the northern side of the Danube-Black Sea Canal



# Constanța Port – Eastern European Gateway



## ➤ Pan-European Corridor no. IX (railway)



- Corridor links: Helsinki – Vyborg – St. Petersburg – Pskov – Moscow – Kaliningrad – Kiev – Ljubashevka/Rozdilna – Chisinau – Bucharest – Giurgiu – Dimitrovgrad
- Connection is made through the national railway network



# Constanța Port – Hinterland



**Constanța Port Hinterland is represented by the countries from Central and Eastern Europe: Germany, Austria, Czech Republic, Slovakia, Hungary, Slovenia, Croatia, Serbia, Bulgaria and Moldavia.**

# Constanța Port Total Throughput 2011 - 2012



tons	2011	2012	%
<i>Total Traffic</i>	<b>45,972,095</b>	<b>50,584,662</b>	<b>+10.03</b>
Maritime Traffic	<b>37,224,663</b>	<b>38,854,222</b>	<b>+4.38</b>
River Traffic	<b>8,747,432</b>	<b>11,730,440</b>	<b>+34.10</b>
<i>Categories of cargo</i>			
Liquid bulk	<b>10,616,509</b>	<b>10,015,932</b>	<b>-5.66</b>
Solid bulk	<b>24,732,592</b>	<b>29,701,792</b>	<b>+20.09</b>
General cargo	<b>4,105,327</b>	<b>4,186,831</b>	<b>+1.99</b>
Containers	<b>6,517,667</b>	<b>6,680,107</b>	<b>+2.49</b>
Seagoing Ships Calls	<b>4,872</b>	<b>5,057</b>	<b>+3.80</b>
River Ships Calls	<b>8,069</b>	<b>9,310</b>	<b>+15.38</b>
<i>Total Ships Calls</i>	<b>12,941</b>	<b>14,367</b>	<b>+11.02</b>

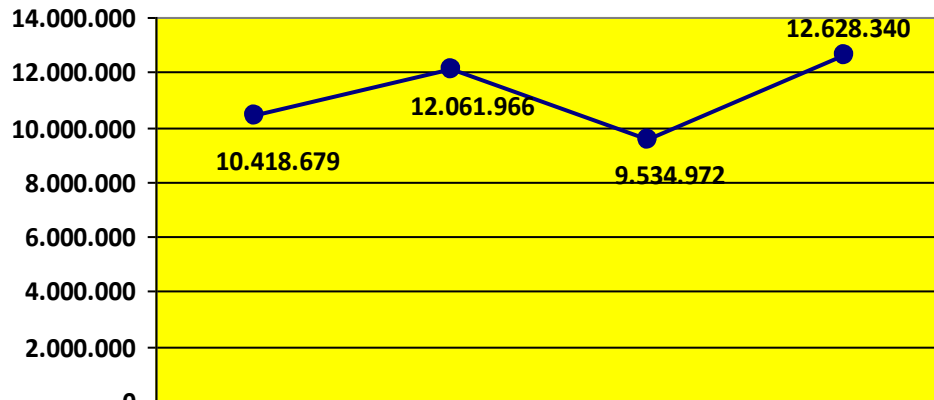
# Cargo traffic with Hungary 2011 -2012

Types of cargo Q(t)	2011	2012	%
Cereals	830,285	1,890,943	127.75
Food stuff and animal feed	90,832	59,031	-35.01
Oil seeds,oleaginous fruits,fats	1,942	57,422	2,856.85
Solid mineral fuels	623,508	961,961	54.28
Iron ore, scrap	71,877	82,579	14.89
Non-ferrous ores and scrap	0	1,347	
Metal products	24,085	53,167	120.75
Chemical products	0	1,187	
Raw and processed minerals	2,394	0	
Fertilizers (nat. and chem.)	32,626	33,572	2.90
Machines, transport equip.	4,812	12,240	154.36
Metalware	78	0	
Miscellaneous	13,547	7,414	-45.27
<b>TOTAL TRAFFIC</b>	<b>1,695,986</b>	<b>3,160,863</b>	<b>+86.37</b>



# Constanța Port Cereals Traffic 2009-2012

Cereals Traffic 2009 - 2012 (t)

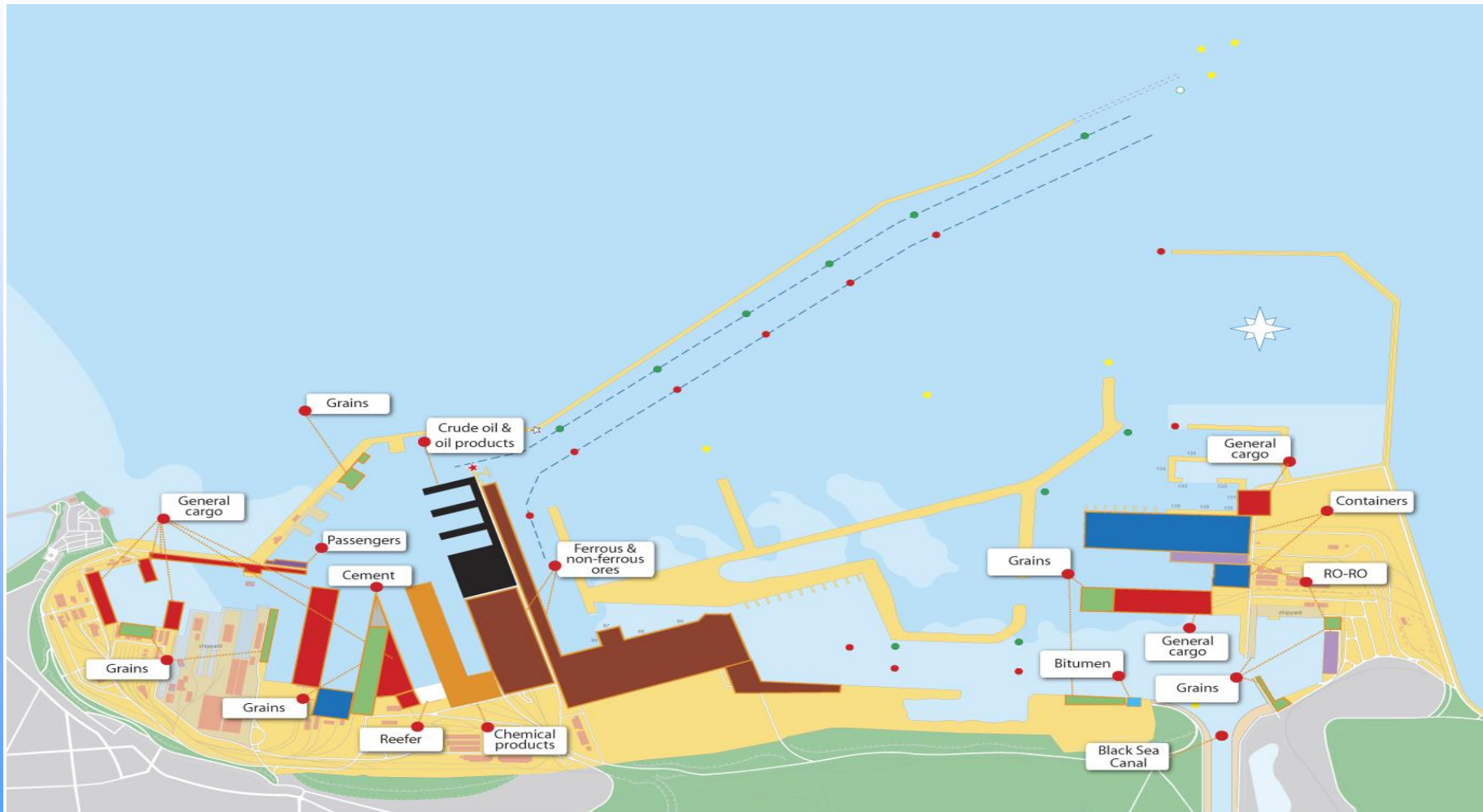


	2009	2010	2011	2012
CerealsTraffic	10.418.679	12.061.966	9.534.972	12.628.340



- Constanța Port, a cereal hub at the Black Sea
- Large storage capacity – approx. 850,000 tons
- Transshipment for river, rail, road traffic
- Modern equipment and facilities for loading and unloading river and maritime ships.

# Port facilities for all types of cargo



# Constanța Port Cereals Operators



## MINMETAL

### Berth 45,46

- Berths can accommodate Panamax ships
- Direct transshipment from barge to vessel
- reception handling rate trucks/wagons (t/h): 4 x 400
- reception handling rate barges/ships (t/h): 2 x 400
- delivery handling rate trucks/wagons (t/h): 3 x 400
- reception grain pits of cargo from trucks, rail, ship: 4
- simultaneous operations (clients): 4
- ship loaders (t/h): 2 x 800

### Storage:

- metal cells for grain storage (tonnes): 32 x 7,400
- horizontal warehouses for meals/soya bean, sunflower (t): 2 x 10,000
- 800 m<sup>2</sup> covered area equipped with rolling bridge of 6.3 t



# Constantza Port Cereals Operators

## UNITED SHIPPING AGENCY

### Berth: 31,32,33

- quay crane (t): 4 x 30
- floating crane (t): 3 x 25
- front loaders: 12
- fully featured conveyor belts transportation system
- loading installations: 5 each for vessels, wagons, barges
- grain terminal storage (t): 192,000
- ship loaders with loading rate of 1,100 (t/h): 2
- grain dryer and conditioner of 400t capacity: 1

### Berth: 102,103

- flat storage grain terminal: 85,000
- storage barges: 28,000 m<sup>2</sup>
- ship loader and fully featured conveyor belt transportation system: 1
- quay crane (t): 1 x 30



# Constanța Port Cereals Operators

## SILOTRANS CHS

Berth: 113,114

- silos – metallic cells: 10 x 10,000 ; 3 x 500
- front loaders (m3): 1 x 2.5 ; 3 x 0.5
- vessel loading installation (t/h): 1 x 800
- wagon loading installation (t/h): 1x 800
- vessel unloading installation (t/h): 1 x800
- wagon unloading installation (t/h): 1 x800
- barge unloading installation (t/h): 1 x 800
- truck unloading installations (t/h): 1x 200 ; 1 x 800
- pneumatic unloader (t/h): 2 x 400



## CANOPUS STAR/TTS

Berth: P-GAB

- allows operation of Panamax ship size
- loading/unloading rate (t/h): 400 to 800
- 2 warehouses with total capacity of 50,000 t
- quay crane (t): 80
- floating cranes



# Constanța Port Cereals Operators

## CHIMPEX

Berth: 54,55,57,61,62,63

- quay cranes (t) : 20 x (6.3 to 20)
- front loaders: 9 (Volvo)
- fork lifts: 11 x (12.5 to 50)
- mobile conveyor belts of 15,25, 35 m: 25
- mobile pneumatic equipment for bulk transshipment (mt/h): 25
- grain ship loader (t/h): 1x400
- trucks with grain and platform trailers (Mercedes): 10
- bulk cereals warehouses capacity (t): 185,000



## SOCEP

Berth: 35,36,42,43

- quay cranes (t): 19 x 6.3 ; 3 x20
- front loaders: 14
- fork lifts (t): 21 x (1.5 to 10)
- mobile conveyor belts: 30
- grabs for bulk (m3): 3.5 to 12
- unloading installation for wagons
- weighing scales: 2 for trucks, 1 for wagons



# Constanța Port Cereals Operators

## **NORTH STAR SHIPPING**

### Berth PL1,PL3-PL5

- direct loading to grain containers
- grain vessel loader (t/h): 1x300
- loading installations for barges: 6
- mobile conveyors: 6
- floating cranes (t): 2x25
- fork lifts: 4

### Storage:

- open platforms: 4 (435 to 16,008 m<sup>2</sup>)
- grain silo (t): 1x80,000 (warehouse+9 metallic bins)
- 21,500 m<sup>2</sup> platform



## **SILOPORT/NIVA PRODCOM**

### Berth 17,18

- quay cranes: 3x20; 2x6
- pneumatic discharging units (t/h) 2x100
- conveyor belt system (t/h): 1x50
- front loaders: 4
- fork lifts: 2



# Constanța Port Cereals Operators



## **BARTER PORT OPERATOR/BARTER TRADING ROMANIA**

### Berth PL7

- silo: 4 cells x 12,000 t
- drying system (t/h): 1x70
- conditioning system (t/h): 1x20
- vessel loading capacity (t/h):1x400, unloading: 1x200
- wagon loading capacity (t/h):1x120; unloading: 1x120
- barge unloading (t/h): 1x200
- truck unloading (t/h): 1x120



## **UMEX**

### Berth 38

- warehouse of 7,200 m<sup>2</sup>
- grabs: 2x12 m<sup>3</sup>
- conveyor belts: 4 quay cranes (t): 2x20
- skil steel: 2
- front loaders: 2





# Constanța Port is ready to welcome your business !

## N.C. Maritime Ports Administration S.A. Constanța



**Address: Incinta Port, Gara Maritima,  
900900, Constanța, Romania**

**Phone: +40 241.611540**

**Fax: +40 241.619512**

**E-mail : [apmc@constantza-port.ro](mailto:apmc@constantza-port.ro)**

**Website: [www.portofconstantza.com](http://www.portofconstantza.com)**

