

Together with Passion



VIII Baja Grain Partnership Conference 09th June 2016

CFND Inland Waterways Logistics in the Danube basin



Rhenus Group - Who we are?

From February 2015 CFND is a part of Rhenus Group

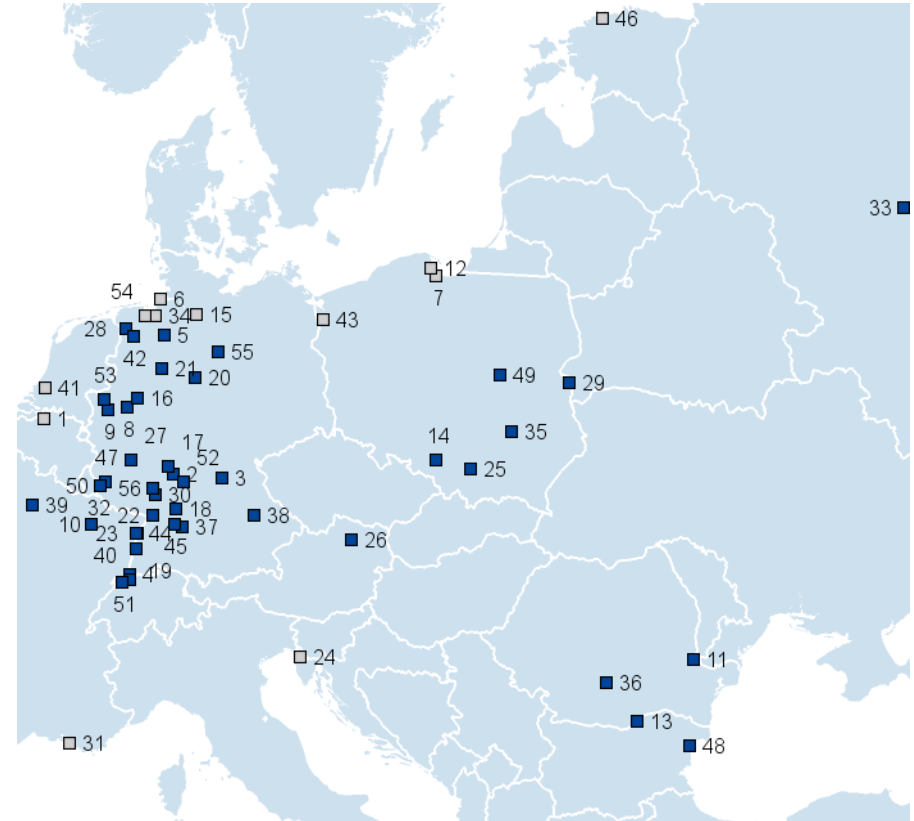
Turnover of € 4,6 billion and 26,000 employees

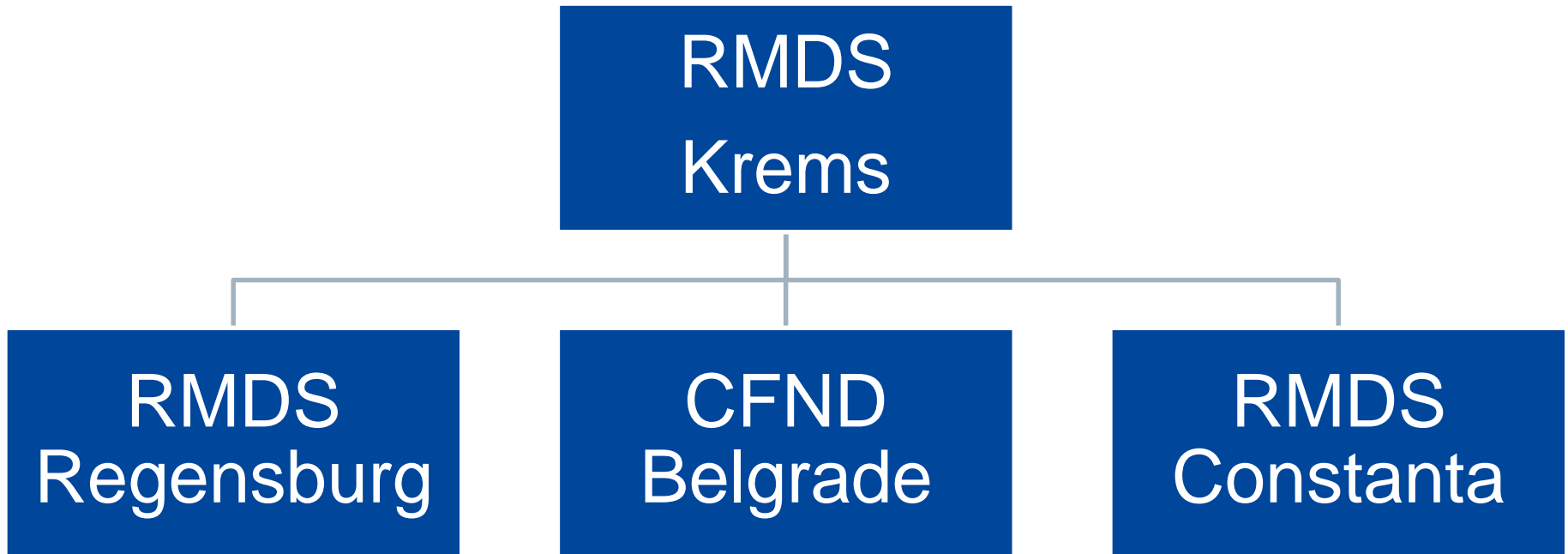
Present at all important European waterways: 42 inland and 8 sea ports

Over 500 business centres in more than 40 countries

Own terminals at the large sea ports

Own areas and halls at all important locations





Mierka Donauhafen Krems



CAPACITIES & EQUIPMENT

- Total area: 250,000 m²
 - 25,000 m² covered storage
 - 20,000 m³ for bulk operations
 - 60,000 m² open storage area
- 5 cranes with a lifting capacity up to 50 t and various lifting equipment

SERVICES

- Trimodal Handling of bulk, break-bulk and heavy lift cargo.
- Storage logistics incl. Bagging
- Multimodal Freight Station - stuffing and stripping of containers.
- Chartering Ship / Rail / Truck
- Project Logistics
- Customs clearance - bounded warehouse

GOODS & PRODUCTS

- Agricultural products
- Chemical commodities and minerals
- Iron and steel products
- Wood and paper
- Consumer goods
- Machinery, plant components, containers

Why Danube?



River Danube

Second biggest river in Europe

10 countries, 40 ports

Connecting the Black sea and the North sea

Cost-efficient mean of transportation

Environmentally friendly & safe



Rhenus office in Serbia - CFND Belgrade

Founded in 2010

Chartering

Own fleet

40 employees in 5 years



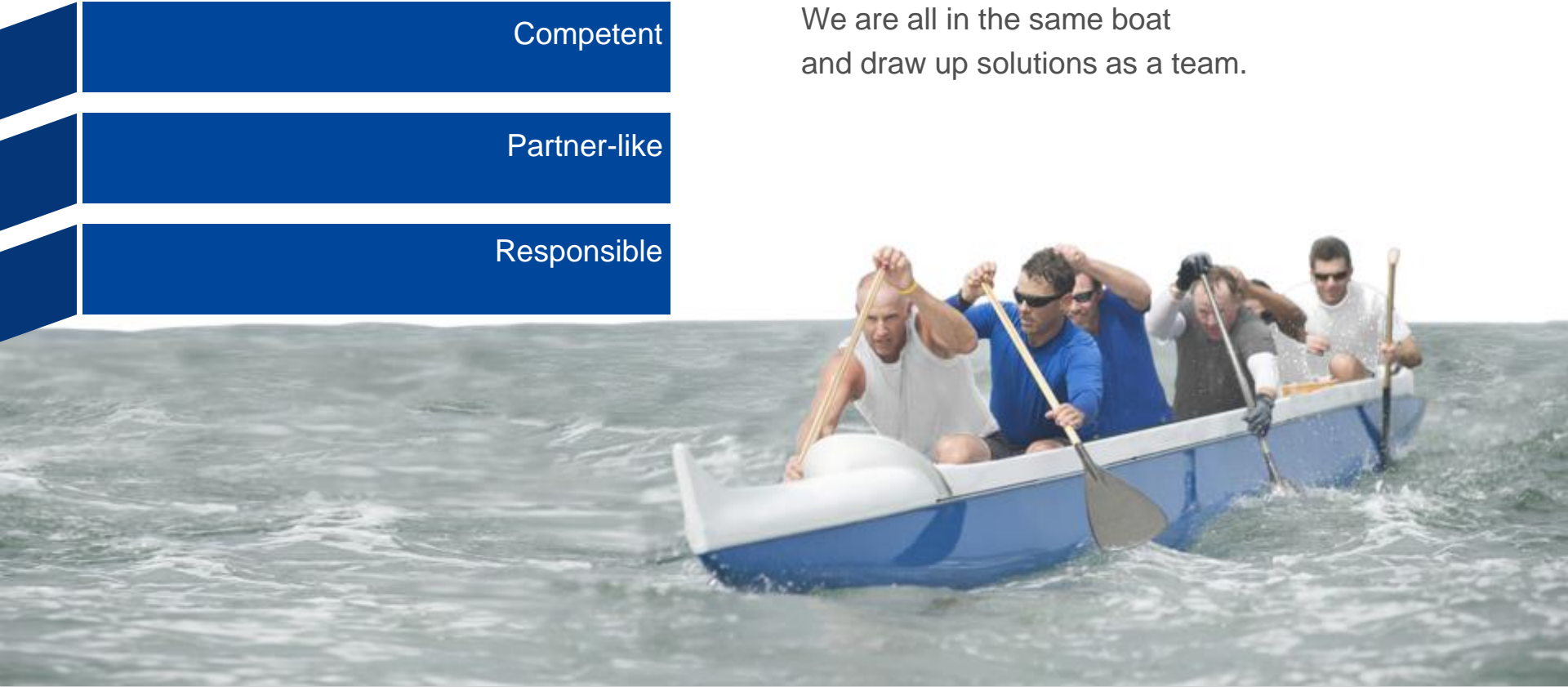
Our employees take responsibility seriously

Competent

Partner-like

Responsible

We are all in the same boat
and draw up solutions as a team.



Our services

Transport with own vessels

Mediation in contract concluding between cargo and ship owners

Tracking of cargo throughout the entire logistic chain



Combined logistics solutions – ship-truck/rail connection

Organization of transshipment in ports

Cargo insurance

River transport capacities

Danube capacities

Covered convoys: pusher + 4-6 barges

Total tonnage 30.000 tons

Self-propelled vessels of long-term partners

Upper Danube

9 self-propelled vessels (600-2000 mt capacity)

ARA / Danube transport

10 motor cargo vessels (85 – 135m)+ access to more than 70 other vessels through our group network

Rhenus Partnership – cooperation with one of the leading companies in river shipping on Western European waterways

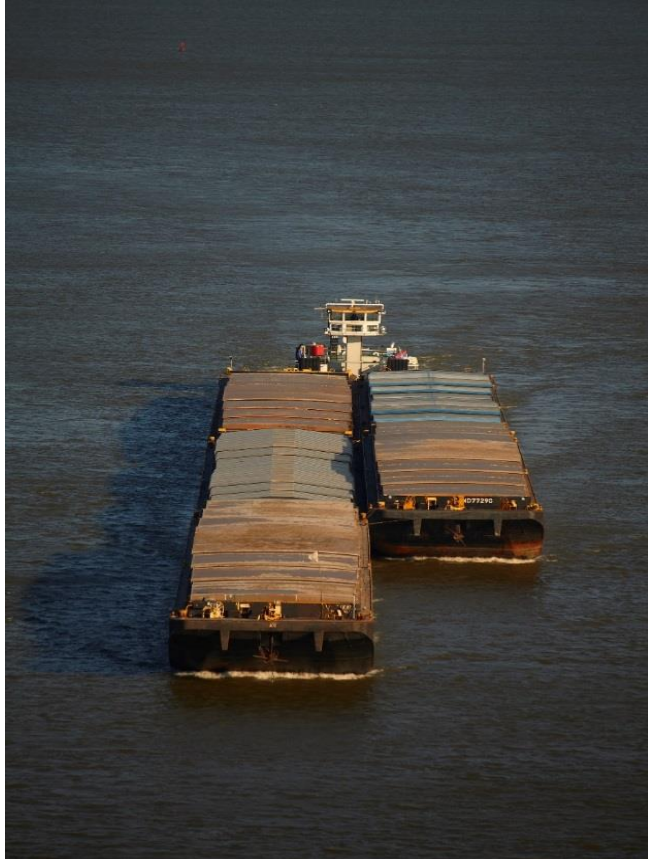


CFND Fleet on the Danube

Well-equipped modern fleet managed by experienced and qualified crew.



Barges type EUROPE II



Aluminium hatch covered

Volume capacity 2700m³

Double hull

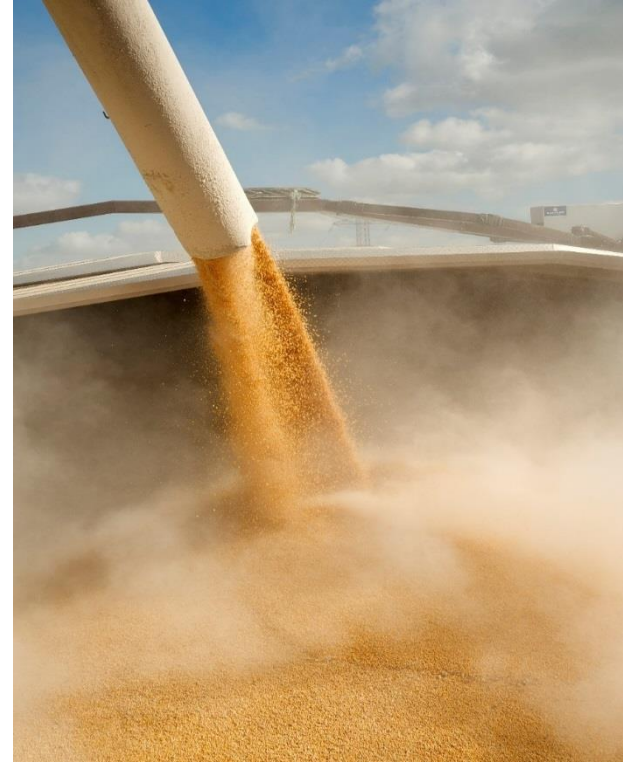
Suitable for light grains

Great variety of products

Bulk cargo – grains, fertilizers, coals

General cargo – palletized and bagged cargo, steel products

Project, oversized cargo



CFND at Baja port – strong cooperation



Logistics - possible distribution using river transport ARA-Ports ← Central Europe → Constanta



**THANK YOU FOR YOUR ATTENTION
AND WELCOME ABOARD!**



Balkanska 2, 11000 Belgrade, Serbia

P: +381(0)11 2055 201

F: +381(0)11 2055 206

e-mail: infocfnd@cfnd.rs

www.cfnd.rs

Together with Passion

Since 1912

