

III. Bajai Gabona Partnerség Találkozó

III. Baha Grain Partnership meeting

Vancsura Kornél

2011.06.16.

2010...

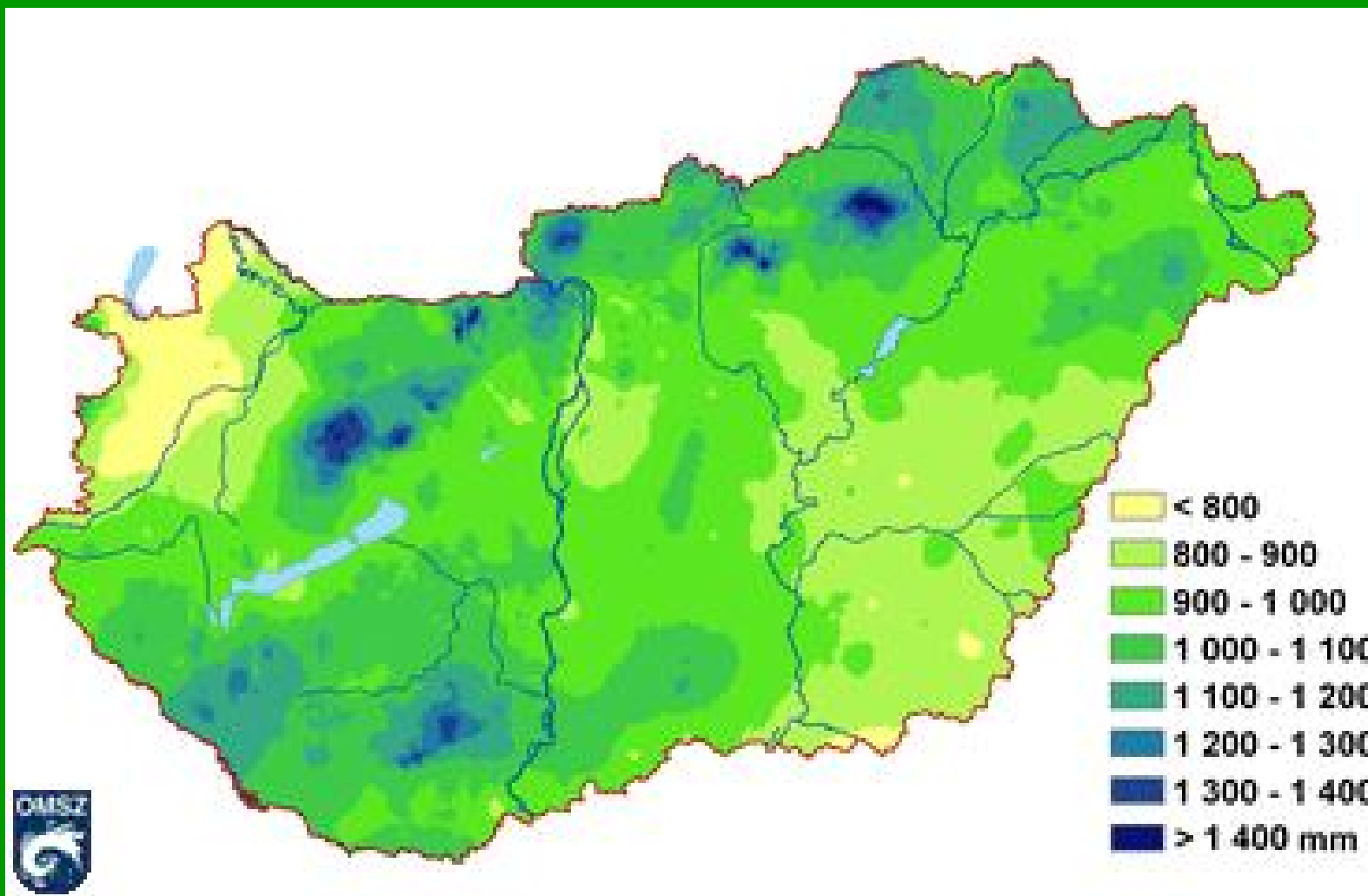


2010...

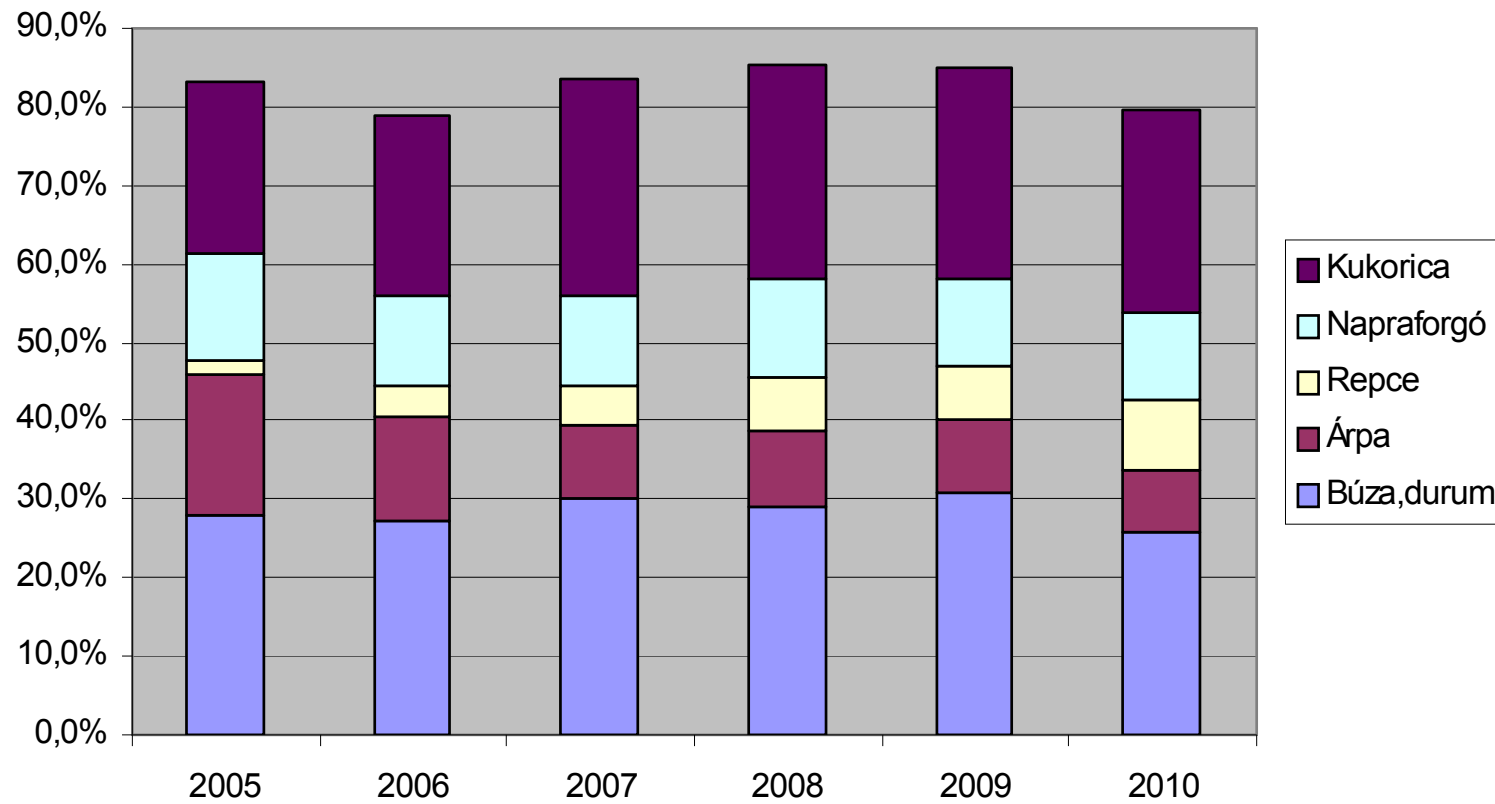


2010...

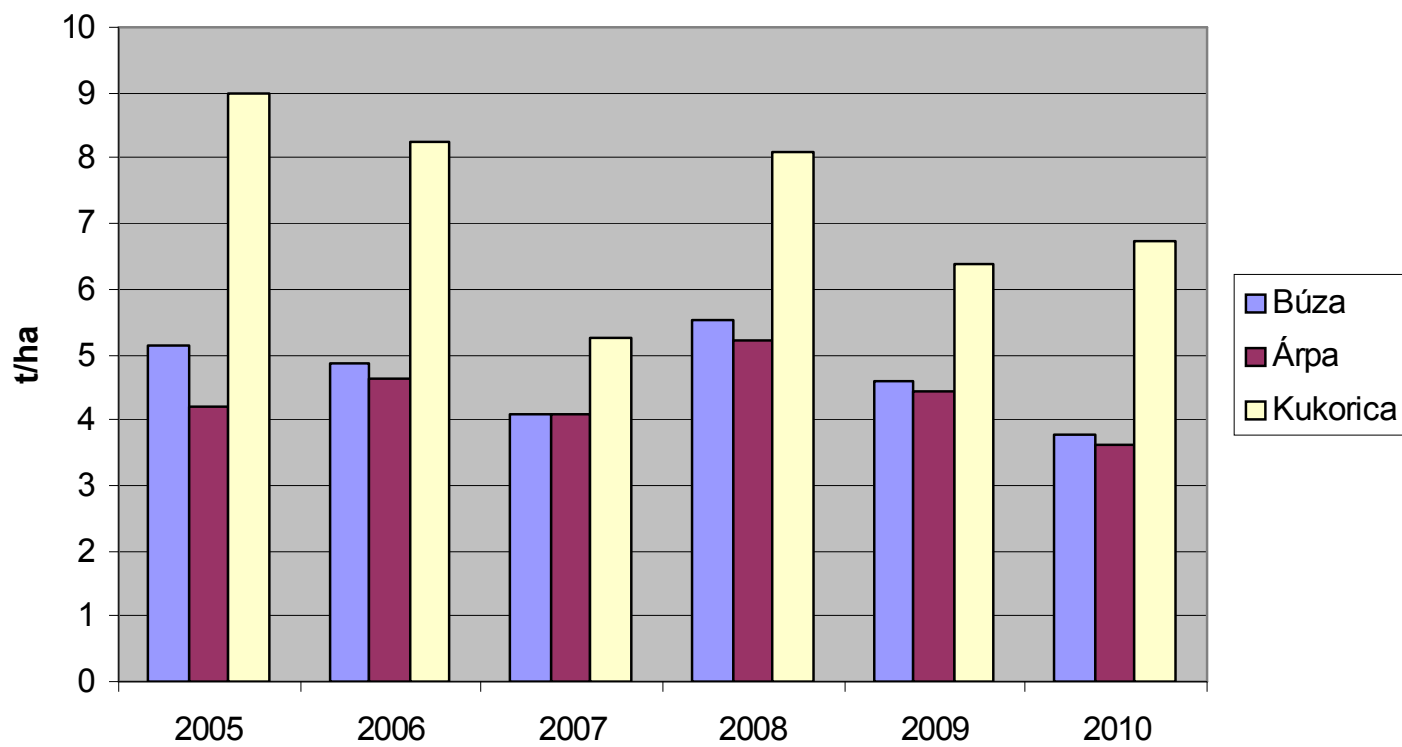




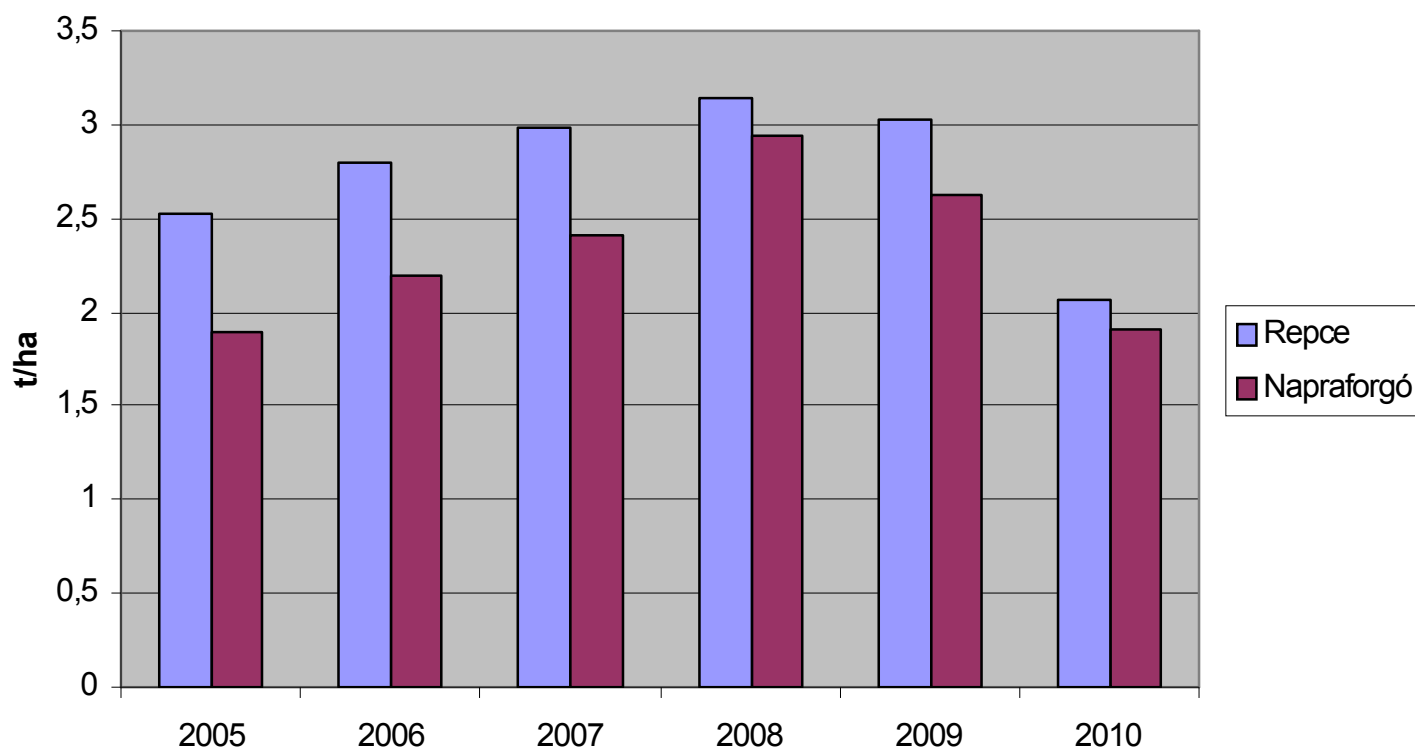
Vetésszerkezet alakulása a főbb növényeknél 2005-2010



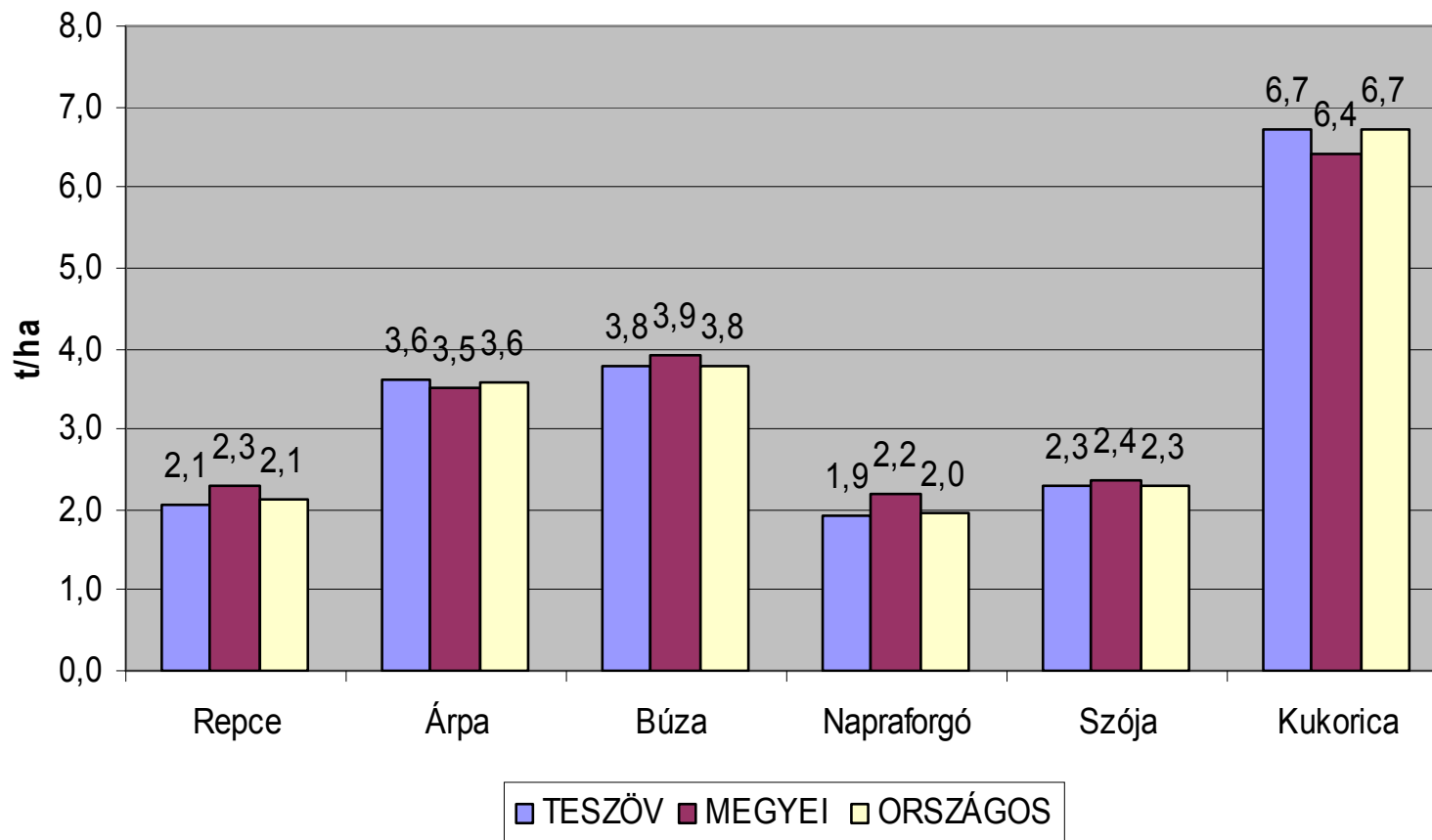
Termésátlagok 2005-2010
- Gabonafélék -



Termésátlagok 2005-2010
- Olajosok -



Főbb növények termésátlagai 2010.



2010. Őszi vetésterület változás (ha)

Növény	2009	2010 (bázis)	2011	%
Őszi árpa	3 721	3 646	3 011	83%
Repce	3 695	4 598	4 400	96%
Őszi búza	15 276	13 009	11 118	85%
-ebből: Durum	833	964	264	27%
Rozs	335	-	-	-
Tritikálé	530	870	597	69%
Összesen	24 390	23 087	19 390	84%

Őszi búza előzetes termésbecslése

2011.06.04.

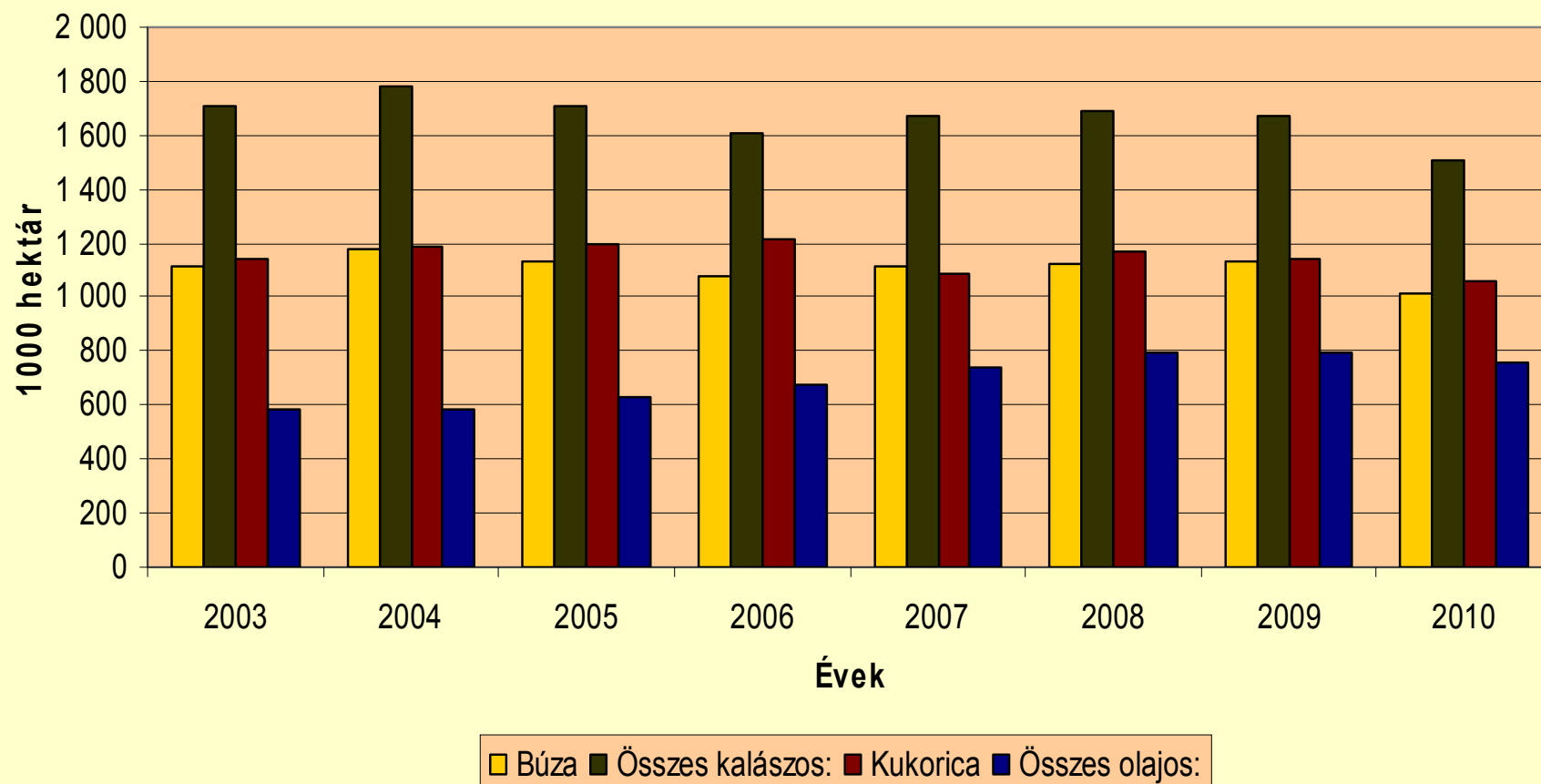
Térség	Vetésterület ha	Termésátlag t/ha
Dunántúl	379 527	4,49
Alföld	453 705	3,85
É-Magyarország	119 007	4,01
Összesen	952 239 ???	4,13

Repce előzetes termésbecslése

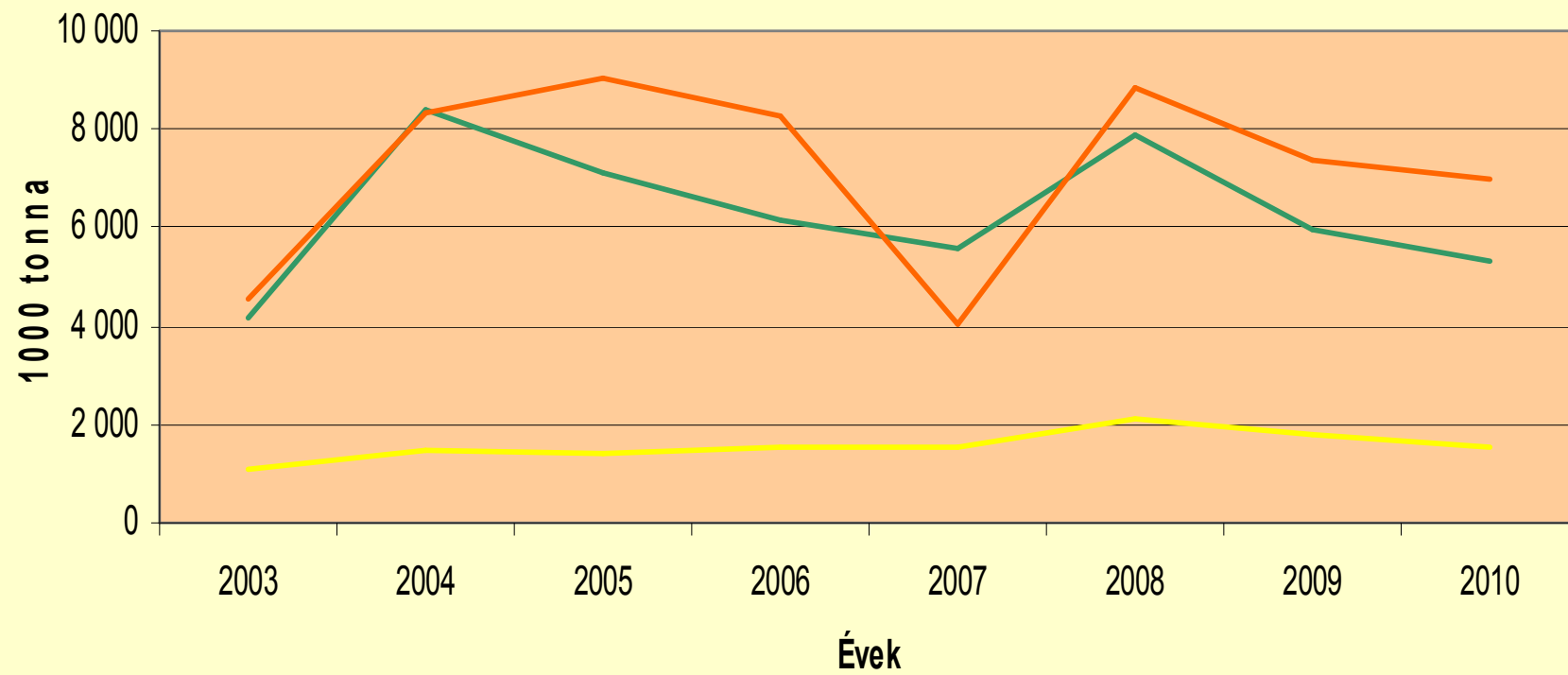
2011.06.04.

Térség	Vetésterület ha	Termésátlag t/ha
Dunántúl	122 466	2,32
Alföld	76 893	2,07
É-Magyarország	38 322	1,86
Összesen	237 681	2,17

Betakarított terület 2003-2010

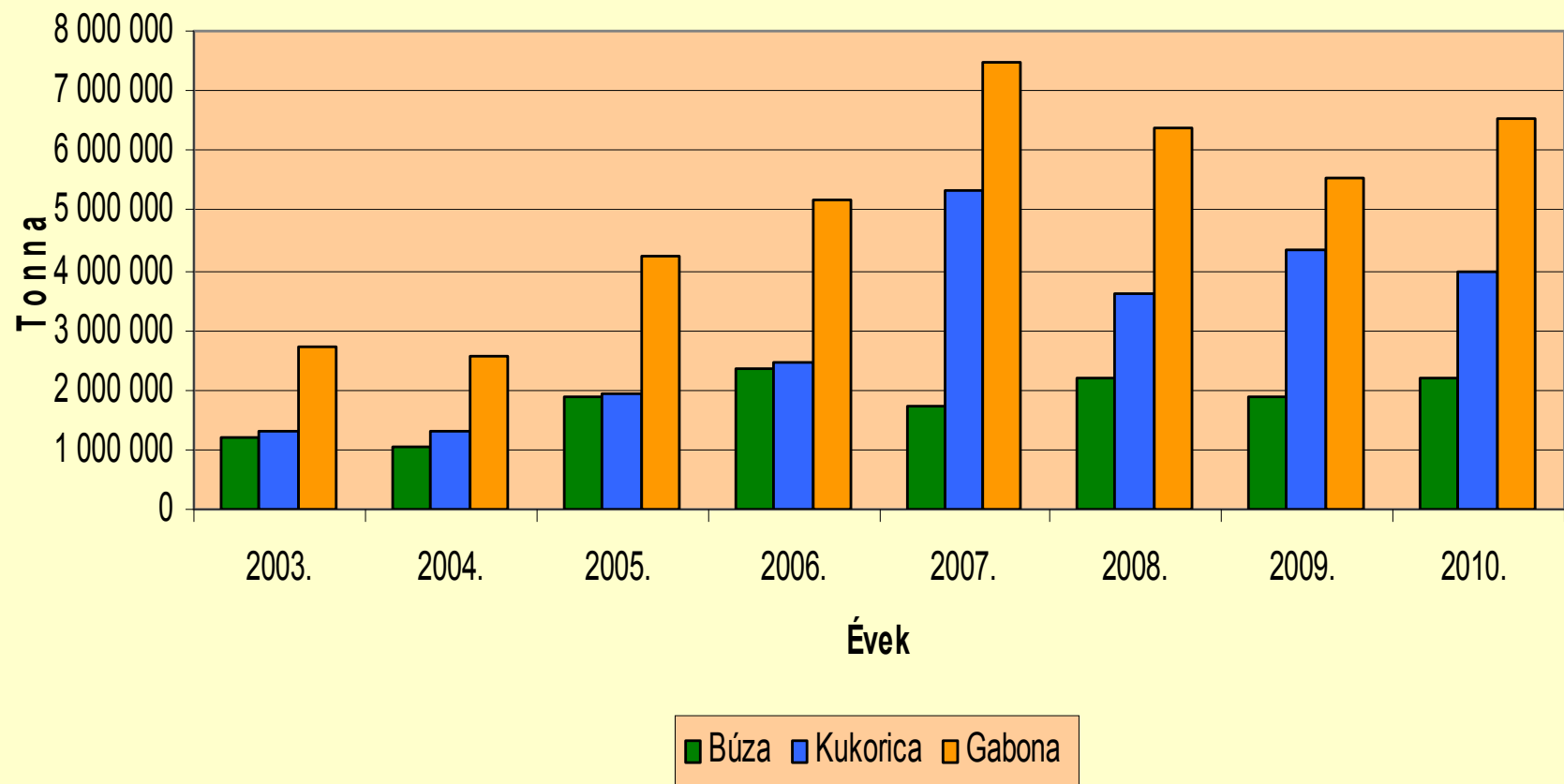


Termésmennyiség 2003-2010

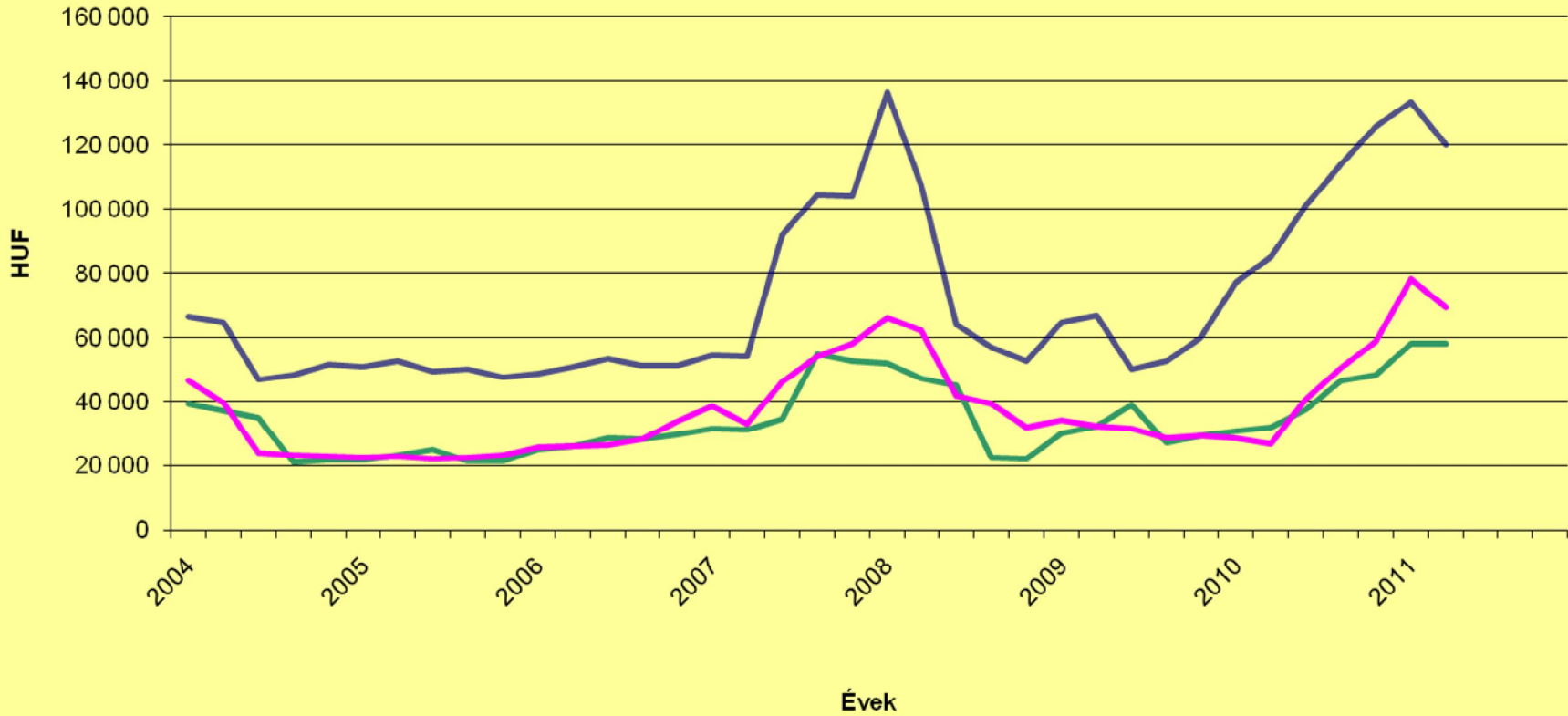


— Összes kalászos: — Kukorica — Összes olajos:

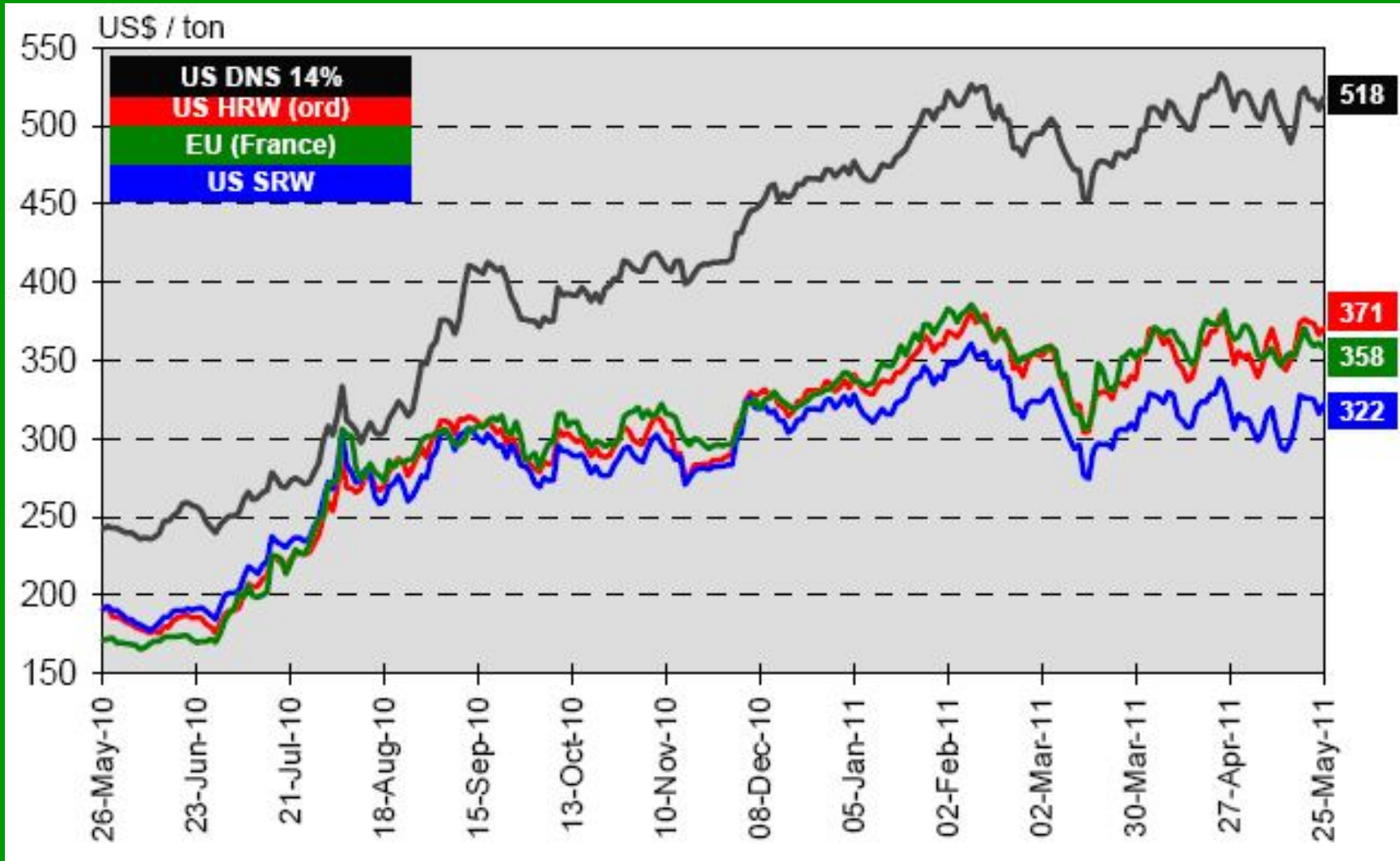
Gabona kiszállítás évenként



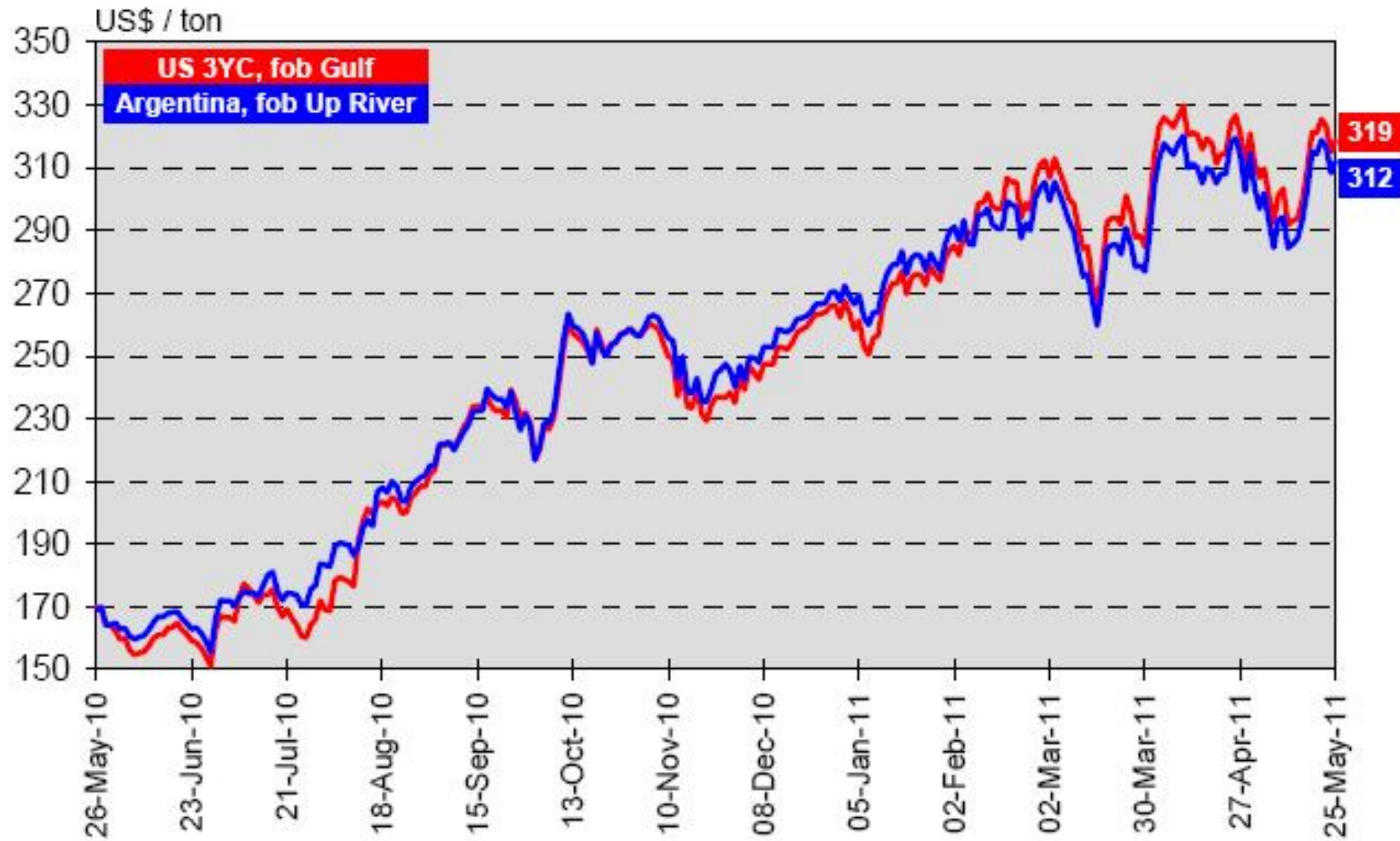
Tőzsdei árak 2003-2011



Búza export árák



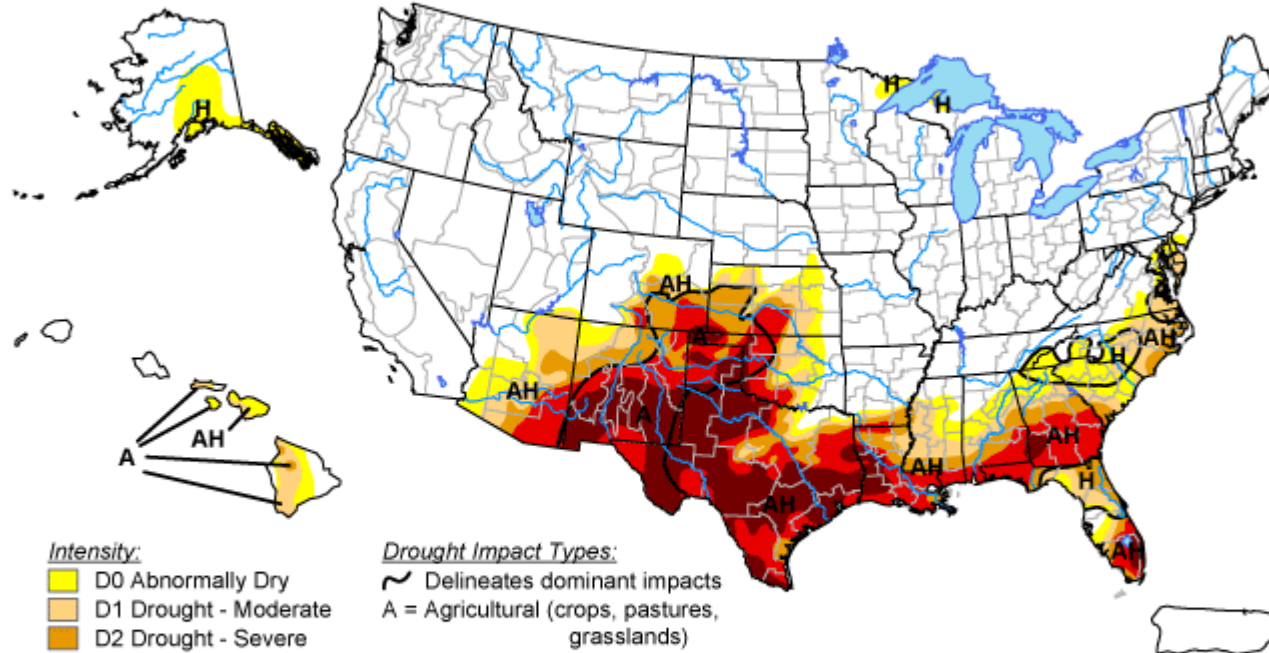
Kukorica export árak








U.S. Drought Monitor

June 7, 2011


Valid 8 a.m. EDT



Intensity:

-  D0 Abnormally Dry
-  D1 Drought - Moderate
-  D2 Drought - Severe
-  D3 Drought - Extreme
-  D4 Drought - Exceptional

Drought Impact Types:

-  Delineates dominant impacts
- A = Agricultural (crops, pastures, grasslands)
- H = Hydrological (water)

The Drought Monitor focuses on broad-scale conditions. Local conditions may vary. See accompanying text summary for forecast statements.

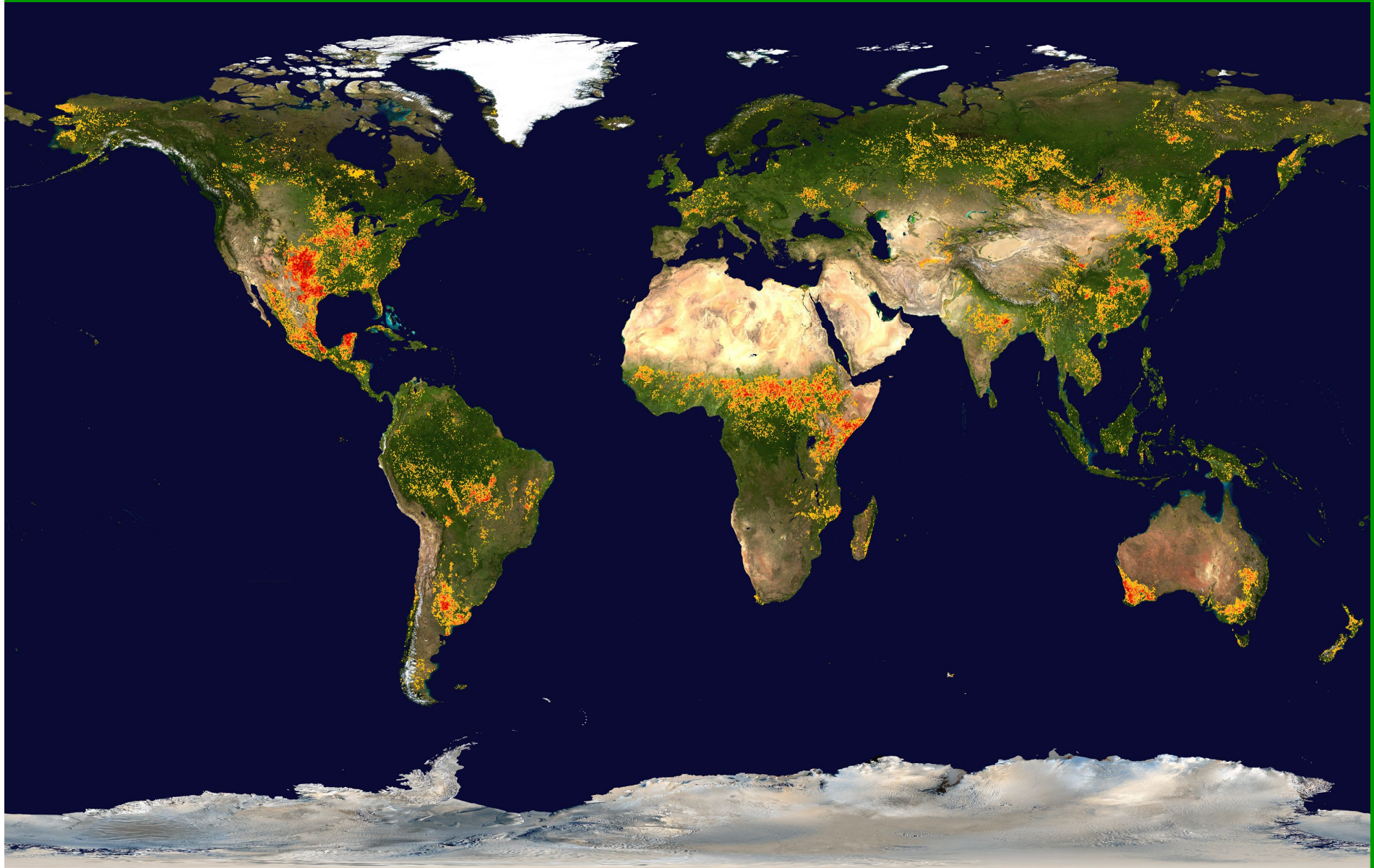
<http://drought.unl.edu/dm>



Released Thursday, June 9, 2011

Author: Matthew Rosenkrans, NOAA/NWS/NCEP/CPC

World Wide Daily Drought Risk Map



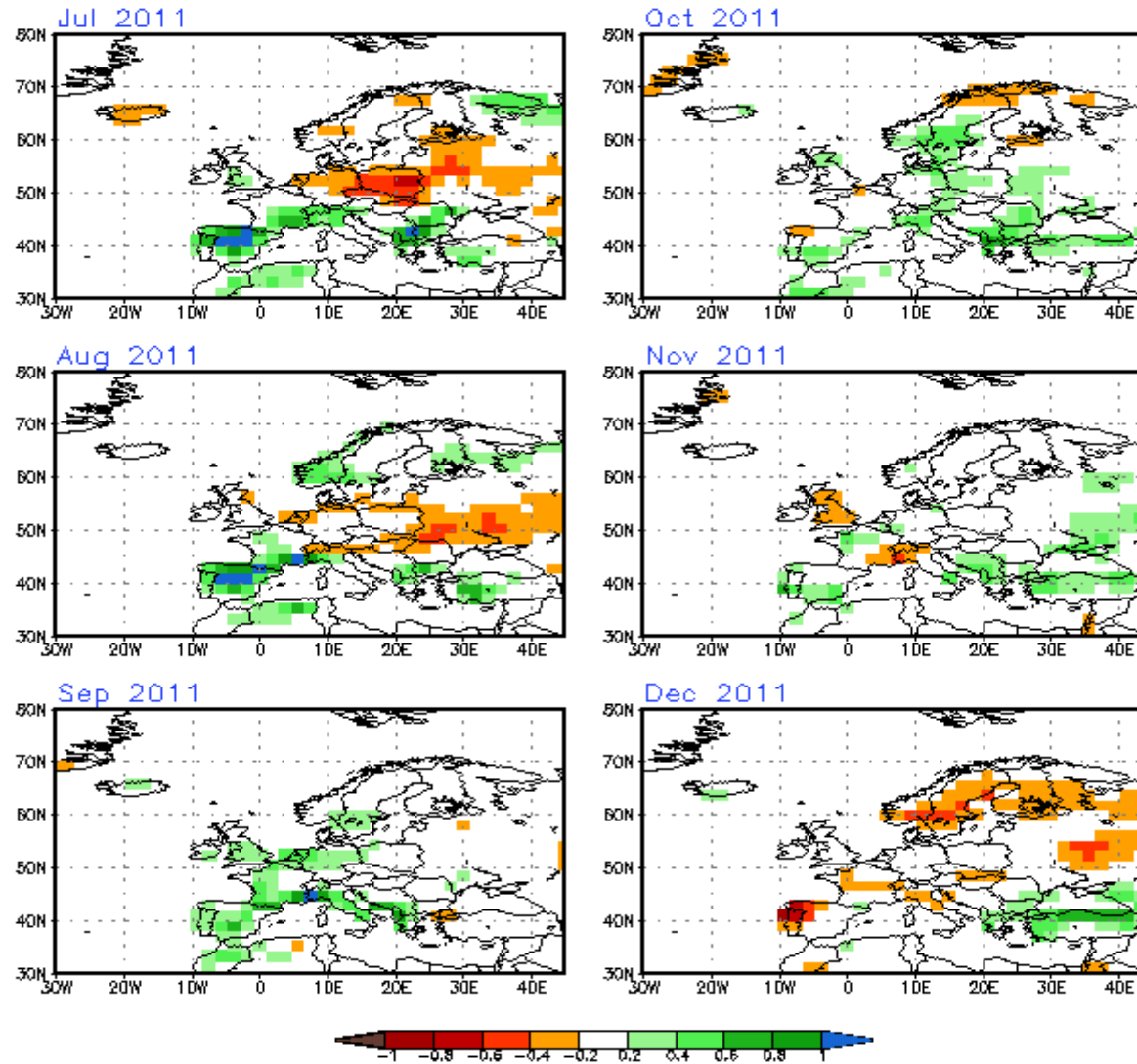


NWS/NCEP/CPC

Initial conditions: 15May2011-24May2011

Last update: Tue Jun 14 2011

CFS monthly Prec (mm/day)



KÖSZÖNÖM A FIGYELMÜKET