

Constantza Port Overview



Constantza Port Characteristics

- *Total area - 3,926 ha*
- *156 berths (140 operational berths)*
- *Quay length - 30 km*
- *Length of breakwaters – 14 km*
- *Estimated total handling capacity – approx. 120 million tons/year*
- *Natural water depths between 8 and 18.5 m*



Constantza Port – your best choice at the Black Sea

- *Constantza port is the main container hub for the Black Sea area*
- *Constantza port - good connections with all the transport modes*
- *Constantza multipurpose port – facilities for all types of cargo*
- *modern facilities for passenger vessels*
- *land availability for future expansion*



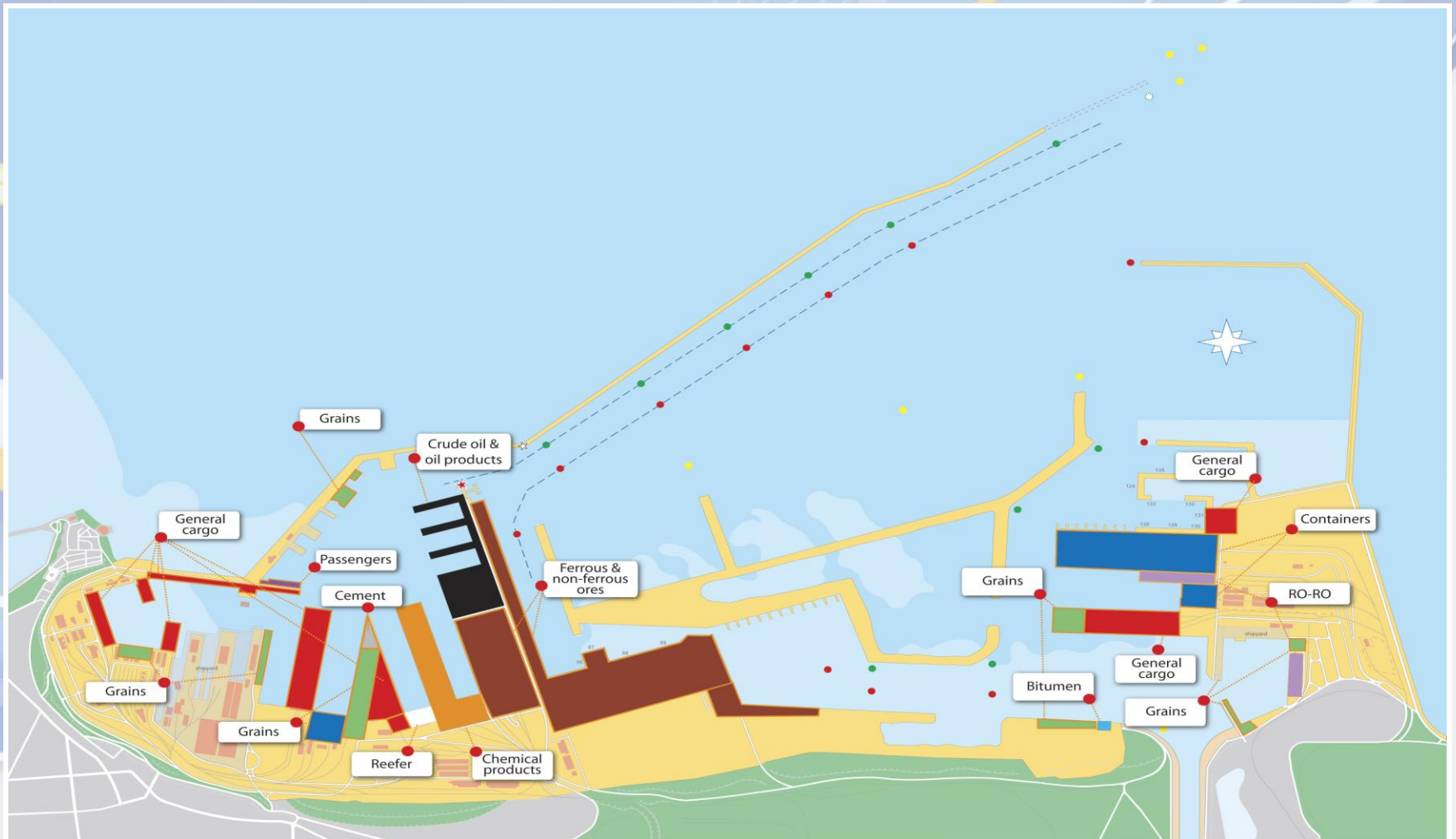
Constantza as River Port



- *connection of the port with the Danube river is made through the Danube-Black Sea Canal*
- *the Canal is 64.4 km long and 90 m wide and has a water depth of 7 m and 17.5 m clearance under the bridges*
- *Direct services between Black Sea and Asia*
- *Direct transshipment and multiple facilities for barge traffic and operations*

Agent	Container Lines
Nord Marine	Constantza - Belgrade- Constantza
Transcanal	Constantza – Giurgiu – Constantza
Helogistic	Budapest – Belgrade - Constantza

Port facilities for all types of cargo



The Danube – Pan European Corridor no. VII



- *The Danube - an efficient alternative to the European rail and road congested transport*

- *Romanian sector – 1,075 km, Danube's most navigable section*

- *Danube Strategy provides a sustainable framework for policy integration and coherent development of the Danube Region*

- *It sets out priority actions to make it an EU region for the 21st century*

- *A target is to develop efficient multimodal terminals at Danube river ports to connect inland waterways with rail and road transport by 2020*

Budapest – 473 km , 0 locks – Belgrade – 867 km, 2 locks – Cernavoda – 65 km, 2 locks - Constantza



Constantza Port – important link in the European transport network

Corridor IV



- *Corridor links: Dresden/Nuremberg via Praga, Vienna/Bratislava, Budapest to Romania*
- *2 branches in Romania: Arad via Bucharest to Constantza, Arad via Craiova to Sofia – to Thessaloniki and Istanbul*
- *Connection will be improved through the completion of the Bucharest – Constantza Highway A2 in 2012*

Corridor IX



- *Corridor links: Helsinki – Vyborg – St. Petersburg – Pskov – Moscow – Kaliningrad – Kiev – Ljubashevka/Rozdilna – Chisinau – Bucharest – Giurgiu – Dimitrovgrad*
- *Connection is made through the national railway network*



Constantza Port – Hub for the Central and Eastern Europe trade



• *For goods in transit from the Far East to destinations in Central Europe the link Danube River – Constantza Port is made via Danube – Black Sea Canal and offers a maritime transport alternative which is 4,165 km shorter.*

• *Largest port in Black Sea, with natural depths that can accommodate the largest ships (300 meters) passing through Bosphorus Strait*



Constantza Port - Hinterland



Constantza Port Hinterland is represented by the countries from Central and Eastern Europe: Austria, Bulgaria, Hungary, Moldavia, Slovenia, Germany, Czech Republic, Serb Republic and Croatia.



Constantza Port Traffic 2010-2011

<i>tons</i>	5 months 2011	5 months 2012	%
Liquid bulk	4,641,119	4,077,776	-12.13
Solid bulk	8,512,170	10,950,279	28.64
General cargo	1,641,360	1,738,679	5.92
Containers	2,580,182	2,687,047	4.14
Total Traffic	17,374,831	19,454,788	11.97

Container traffic

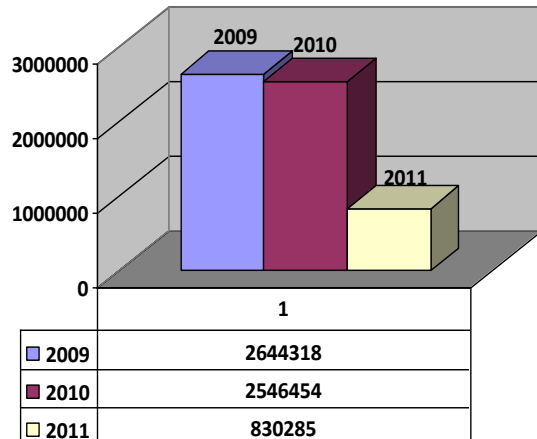
	2006	2007	2008	2009	2010	2011
TEU	1,037,066	1,411,414	1,380,935	594,303	556,694	662,796



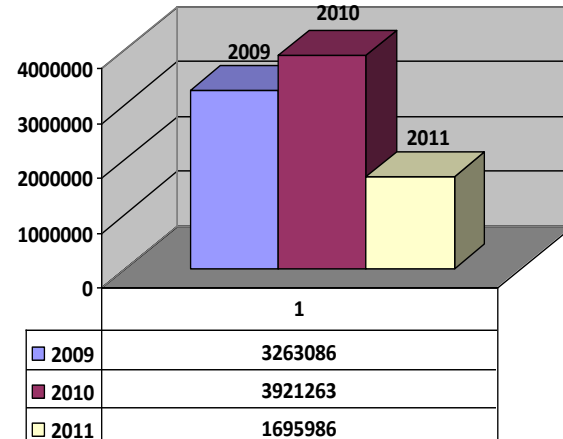
Constantza Port with Traffic Hungary 5 months 2010-2011

<i>tons</i>	5 months 2011	5 months 2012	%
Cereals	384,951	960,506	149.51
Total Traffic	814,553	1,440,046	76.78

Cereals Traffic 2009-2011



Total Traffic 2009-2011



Constantza Port - Partnership Agreements



To encourage the increase of traffic goods, Constantza port has established Partnership Agreements with important ports in the Europe, Caucasus and Middle-East regions.



Constantza Port – important European link for TRACECA

TRACECA – Intergovernmental Commission

- *Promotion of regional transport dialogue*
- *Ensuring the efficient and reliable Euro-Asian transport links*
- *Promoting regional economy on the whole*
- *Romania has the presidency for the year 2012*
- *Constantza Port represents an important member, ensuring a viable link to UE for the TRACECA countries*



IDEA - ongoing TRACECA project in which Romania is involved

Officially started on May 2009, the IDEA project (Transport dialogue and interoperability between the EU and its neighboring countries and Central Asian countries) has a duration of three years and aims at delivering a sustainable, efficient and integrated multi-modal transport system in the TRACECA region.

Constantza Port – Cereal Terminals

Canopus Star S.R.L.

- *Member of TTS Group, building up its activity on the North breakwater of Constantza Port*
- *Specialized in handling and storage of grains and feed products*
- *2 warehouses with storage capacity of 50.000 tons*
- *Draft of 13.5 m*
- *Transshipment rates between 400-800 tons/hour*
- *Simultaneous operation on different modes of transport – rail, road, river and maritime*



Constantza Port – Cereal Terminals

United Shipping Agency S.R.L.

- *Operations in northern and southern part of Constanta Port:*

- *berth 30-33 storage capacity – 200.000 tons*
 - *berth 36/37 storage capacity – 30.000 tons*
 - *berth 102-103 storage capacity – 85.000 tons*
- *Terminal is capable to simultaneously load 2 vessels and discharge one vessel or to load one vessel and discharge 2.*

- *Rates are about 1,300 mts per hour for each vessel*

- *Loading/discharging rates for trucks are about 2 x 350 mts per hour and for railcars about 2 x 1,000 mts per hour*



Constantza Port – Cereal Terminals

Minmetal S.A.

- *Draft of 13,5 meters*
- *Storage capacity of 260.000 mts:*
 - *32 metal vertical bins of 7,400 tons each*
 - *2 flat warehouses of 10,000 tons each*
- *Reception and delivery rates of 15,000 tons/day*
- *Dedicated reception pits for road, rail, river and maritime vessels*
- *Direct loading to grain containers*
- *Direct transshipment barge to vessel*



Constantza Port – Cereal Terminals

Silotrans S.R.L.

- *Company owned by CHS, as the majority shareholder and Schenker Romtrans SA*
- *Located on Pier 1S*
- *Storage capacity of 108,500 mt*
- *Facility is fully controlled by PLC and PC*
- *Handling capacity of 800 mt/hour*
- *Simultaneously unload of barges, railcars, trucks and load sea/ocean going vessels*
- *Grain can be received straight from field to be conditioned (cleaned and dried)*



Constantza Port is ready to welcome your business !

N.C. Maritime Ports Administration S.A.
Constantza

**Address: Incinta Port, Gara Maritima, 900900
Constantza, Romania**

Phone: +40241.611540

Fax: +40241.619512

E-mail : apmc@constantza-port.ro

Website: www.portofconstantza.com

